



**Homer Drive, E14**  
£1,000,000

**Dexters**



## Homer Drive, E14

Offered to the market with no onward chain is this split-level, three-bedroom home, located within the highly sought-after Cyclops Wharf development. The property boasts three private terraces, two allocated parking spaces, a 24-hour concierge service, and exclusive access to residents' facilities.

Homer Drive is ideally located just 0.5 miles from Mudchute DLR station, providing excellent transport links across the City.

### Features

- 2,289 Square Feet
- Three Terraces
- Chain Free
- Split Level
- Two Allocated Parking Spaces
- 24 Hour Concierge





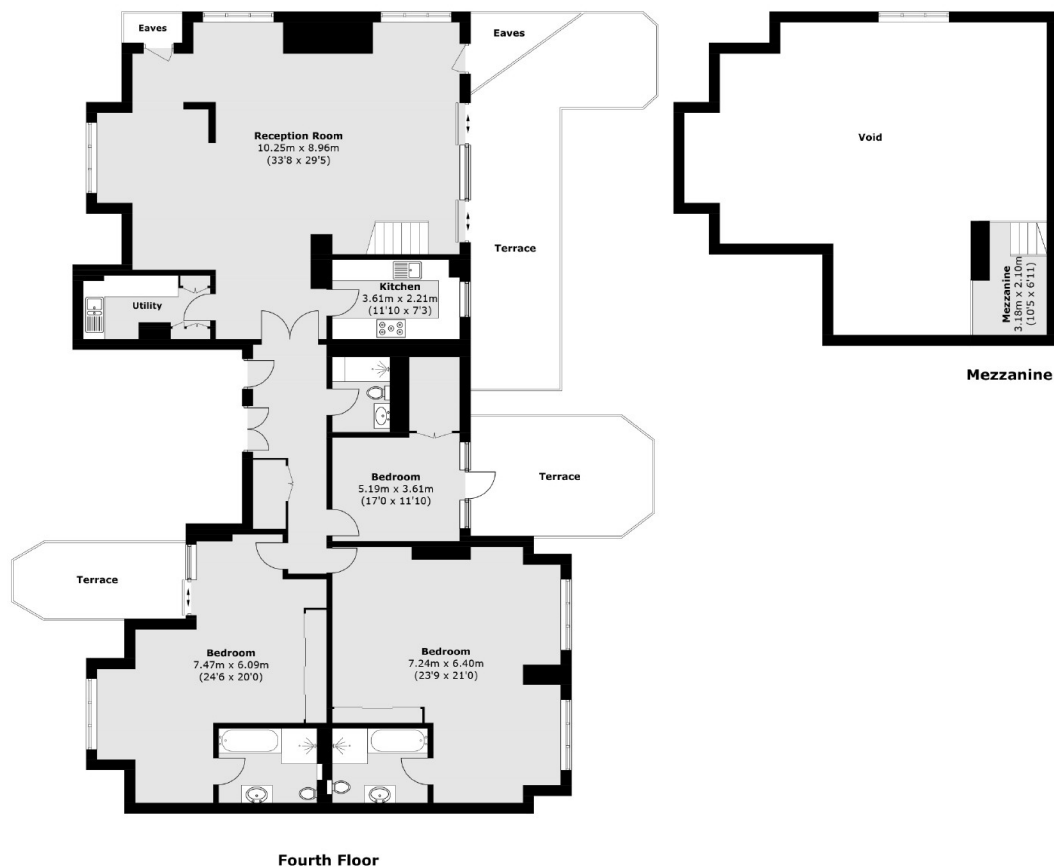








# Homer Drive, London, E14



Total area (approx.): 212.7 sq. m (2,289.5 sq. ft)  
(Including Mezzanine / Excluding Eaves)  
Terrace: 57.1 sq. m (614.6 sq. ft)