



## Fairmont Avenue, E14

### £550,000

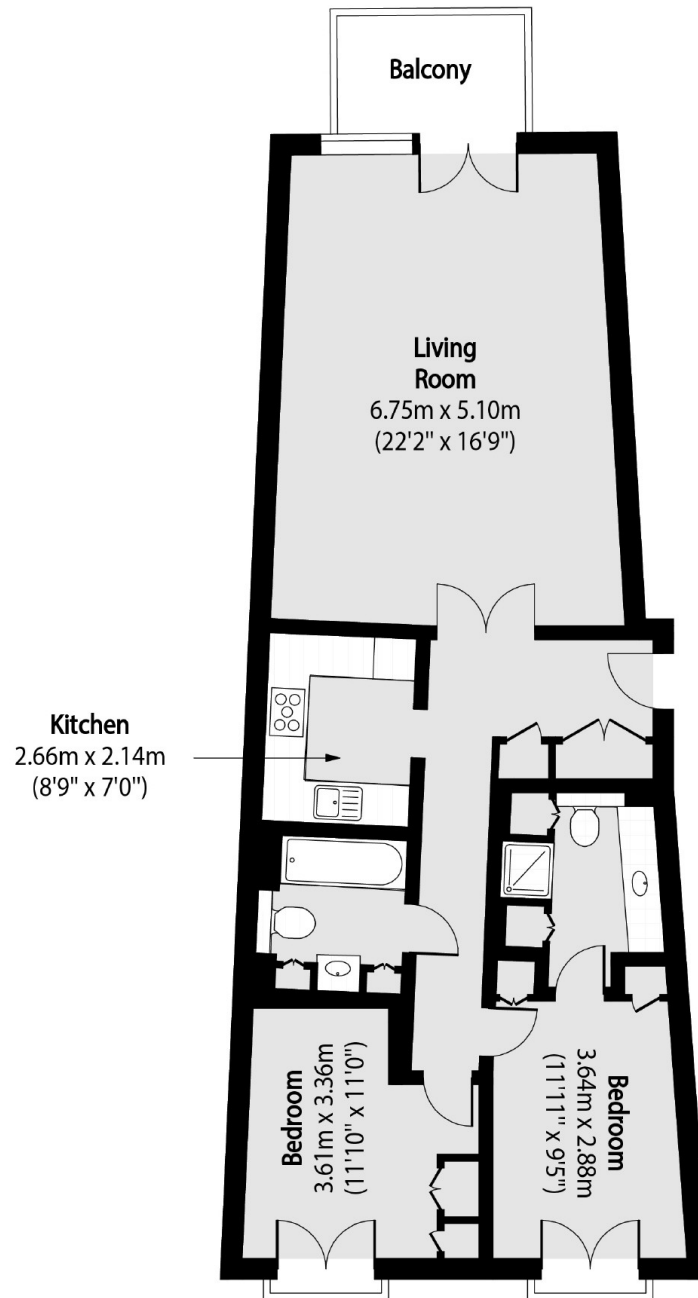
An exceptional and much sought-after two double bedroom riverside apartment, featuring a private balcony with breathtaking views of the River Thames and the O2 Arena. Impeccably presented throughout, the property offers wooden flooring, two luxurious bathrooms, a full concierge service, 24-hour security, exclusive residents' leisure facilities, and the added benefit of valet parking.

New Providence Wharf has great transport links being under three quarters of a mile walk from Canary Wharf and there are three DLR stations within a third of a mile away.

### Features

- 921 Square Feet
- River Views
- Two Double Bedrooms
- Two Bathrooms
- Concierge Service
- Residents Leisure Facilities

# Fairmont Avenue, London, E14



Total area (approx): 85.53 sq m (921 sq. ft)

Balcony total area (approx): 4.68 sq m (50 sq. ft)

## Dexters

Canary Wharf  
39 Westferry Road  
London  
E14 8JH  
Sales  
020 7517 1199

Energy Rating: C. We aim to make our particulars both accurate and reliable. However they are not guaranteed; nor do they form part of an offer or contract. If you require clarification on any points then please contact us, especially if you're traveling some distance to view. Please note that appliances and heating systems have not been tested and therefore no warranties can be given as to their good working order.

 **RICS** | Regulated  
Estate Agent  
and Letting Agent

[dexters.co.uk](https://www.dexters.co.uk)