



Boardwalk Place, E14

£576 Per week

A bright two bedroom apartment in this dockside development. This spacious apartment has two bathrooms, a separate kitchen and a large balcony.

Boardwalk Place is a short distance to Canary Wharf and a wealth of local amenities, including Billingsgate Market, a variety of restaurants and plenty transport links into the City.

Features

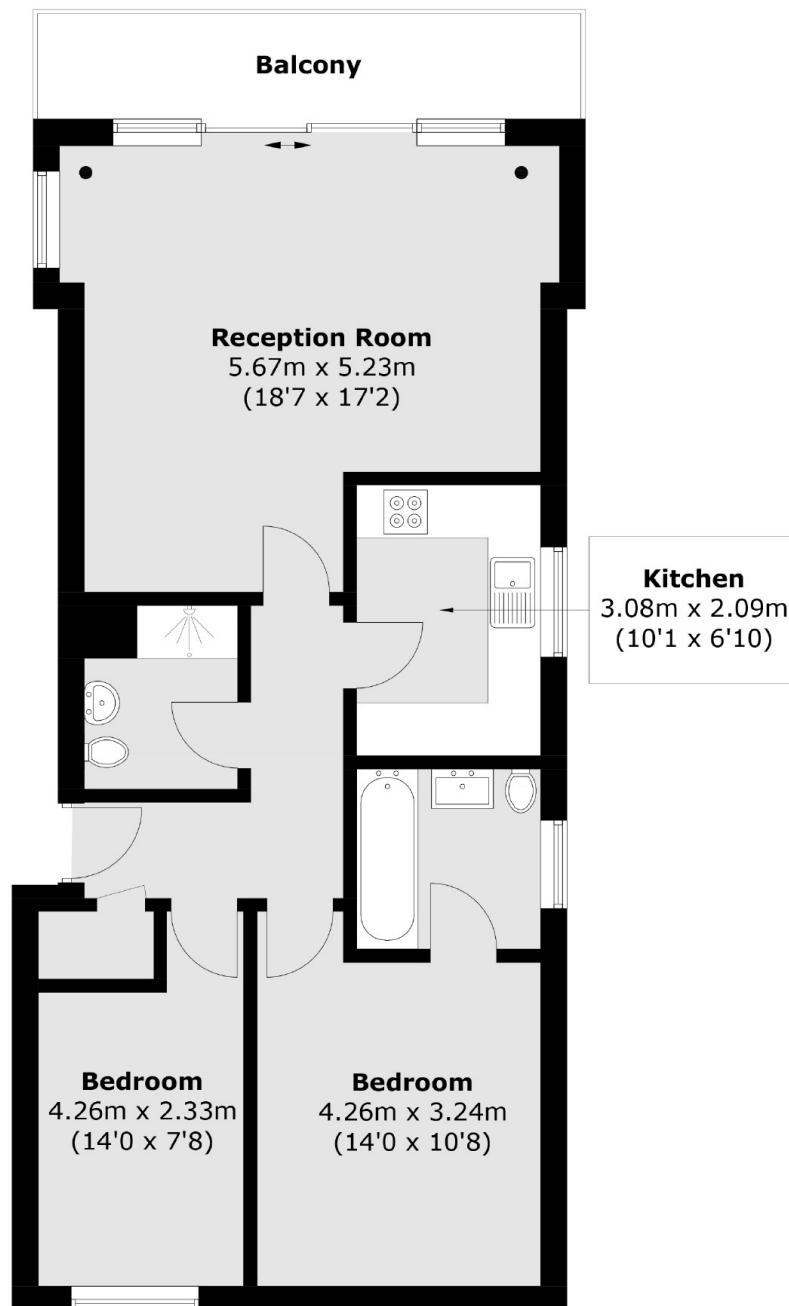
- First Floor Position
- Two Bedrooms
- Two Bathrooms
- Private Balcony
- Wooden Flooring
- Concierge Service



Boardwalk Place, E14



Boardwalk Place, London, E14



Total area (approx.): 70.7 sq. m (761.0 sq. ft)
Balcony : 7.4 sq. m (79.6 sq. ft)

Dexters

Canary Wharf East
39 Westferry Road
London
E14 8JH
Lettings
020 7590 9550

Energy Rating: C. We aim to make our particulars both accurate and reliable. However they are not guaranteed; nor do they form part of an offer or contract. If you require clarification on any points then please contact us, especially if you're traveling some distance to view. Please note that appliances and heating systems have not been tested and therefore no warranties can be given as to their good working order.

 **RICS** | Regulated
Estate Agent
and Letting Agent

[dexters.co.uk](https://www.dexters.co.uk)