



Wards Place, E14

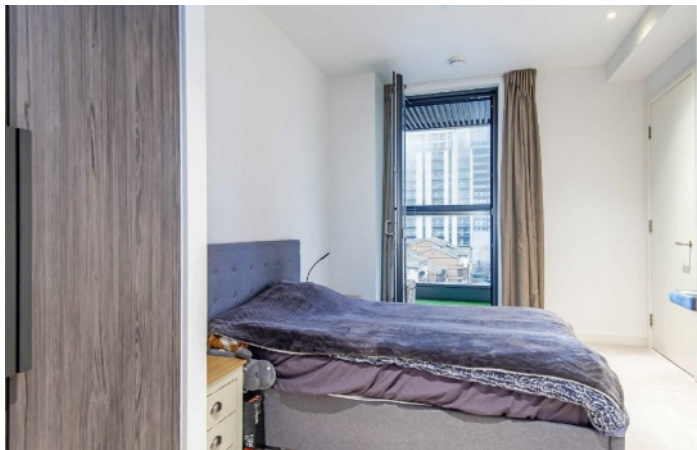
£900,000

Welcome to this two bedroom home in the sought after development, Wardian. The property includes a private balcony, concierge services, and high end resident facilities.

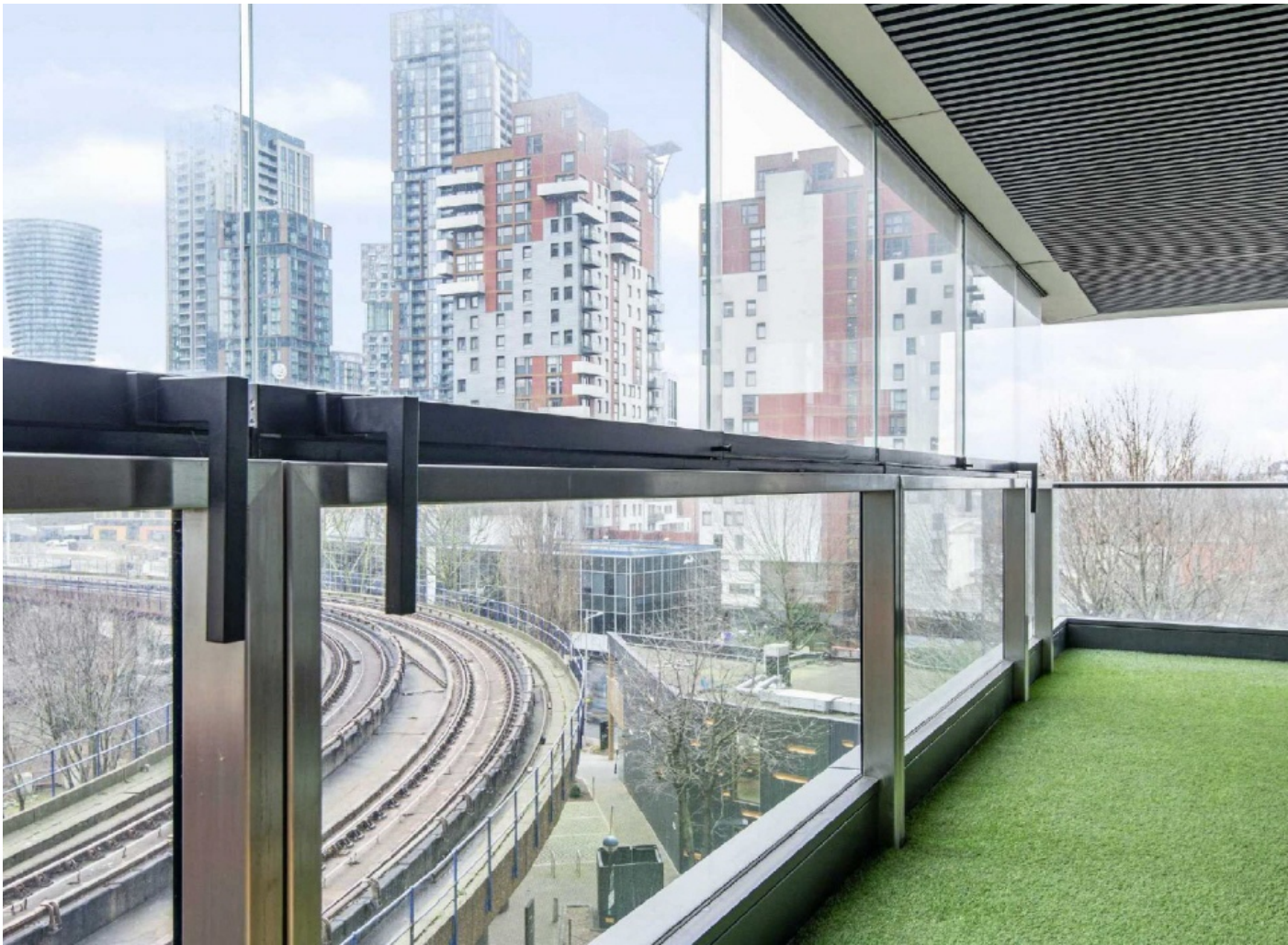
The Wardian is within walking distance of the shops, bars and restaurants of Canary Wharf. Many transport connections can be also be reached by foot in just few minutes. South Quay, Canary Wharf Underground, Heron Quay (DLR), Canary Wharf Bus (south), and the Crossrail.

Features

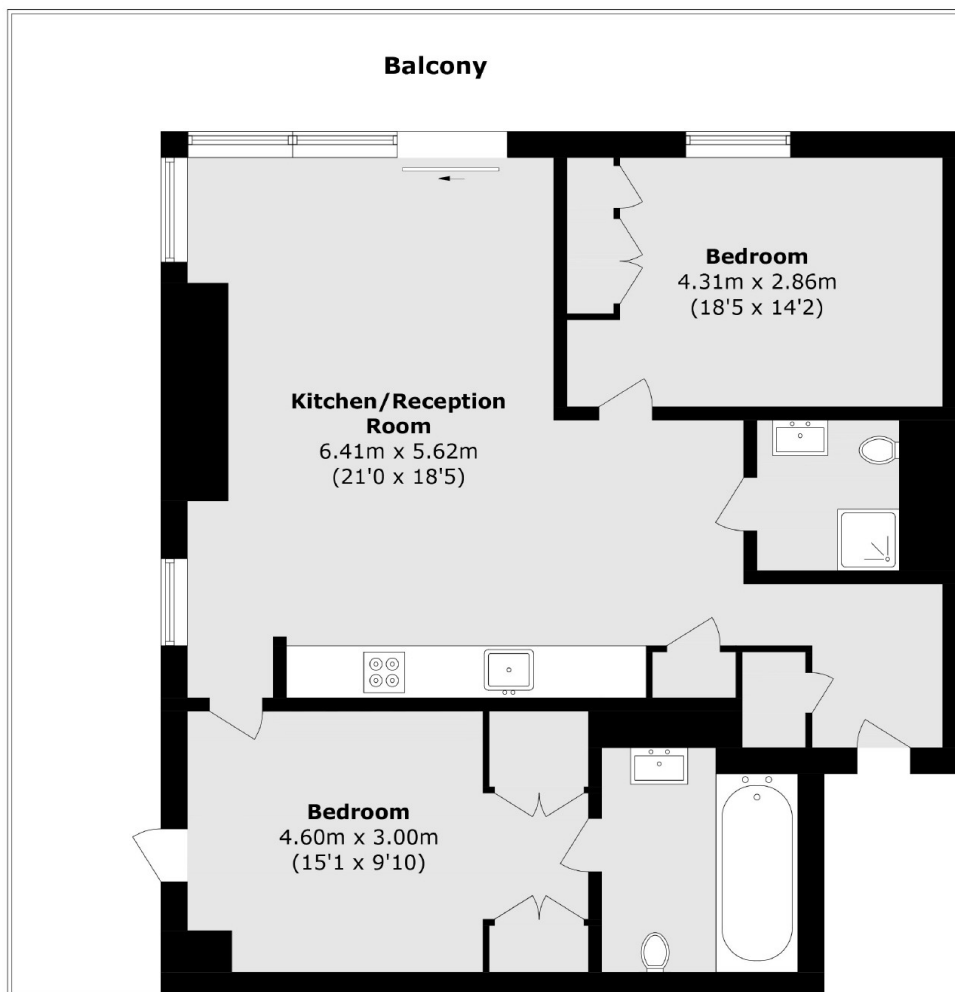
- Investors Only
- Private Balcony
- Third Floor
- High End Resident Facilities
- Concierge Services
- Two Double Bedrooms



Wards Place, E14



Wards Place, London, E14



Total area (approx.): 76.6 sq. m (824.5 sq. ft)
Balcony area (approx.): 32.1 sq. m (345.5 sq. ft)

Dexters

Canary Wharf
39 Westferry Road
London
E14 8JH
Sales
020 7517 1199

Energy Rating: B. We aim to make our particulars both accurate and reliable. However they are not guaranteed; nor do they form part of an offer or contract. If you require clarification on any points then please contact us, especially if you're traveling some distance to view. Please note that appliances and heating systems have not been tested and therefore no warranties can be given as to their good working order.

 **RICS** | Regulated
Estate Agent
and Letting Agent

[dexters.co.uk](https://www.dexters.co.uk)