



Millharbour, E14

£2,500 Per week

An expansive four bedroom penthouse in this dockside development. This interior designed apartment is perfect for entertaining with its open-plan reception room, floor to ceiling windows and two large terraces.

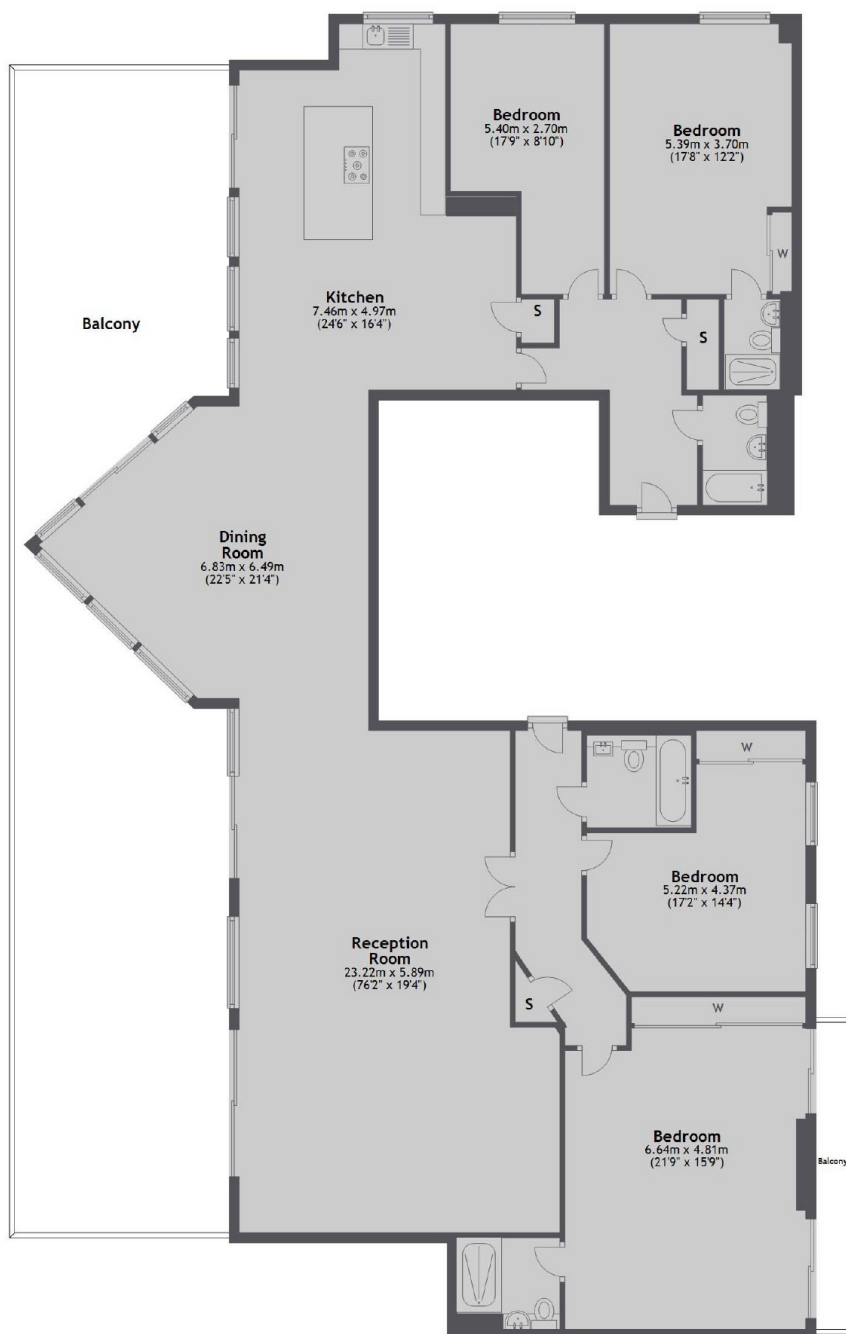
Millharbour is moments away from the bars and restaurants of South Quay, including the popular Lotus Floating Restaurant.

Features

- Four Bedrooms
- Four Bathrooms
- Penthouse
- Sonos Sound System
- Air Conditioning
- Two Parking Spaces

Millharbour, London, E14

14th Floor



Main area: Approx. 239.4 sq. metres (2576.5 sq. feet)
Plus balconies, approx. 88.9 sq. metres (956.5 sq. feet)

Dexters

Canary Wharf
39 Westferry Road
London
E14 8JH
Lettings
0207 517 1190

Energy Rating: C. We aim to make our particulars both accurate and reliable. However they are not guaranteed; nor do they form part of an offer or contract. If you require clarification on any points then please contact us, especially if you're traveling some distance to view. Please note that appliances and heating systems have not been tested and therefore no warranties can be given as to their good working order.

 **RICS** | Regulated
Estate Agent
and Letting Agent

[dexters.co.uk](https://www.dexters.co.uk)