



Marsh Wall, E14

£585,000

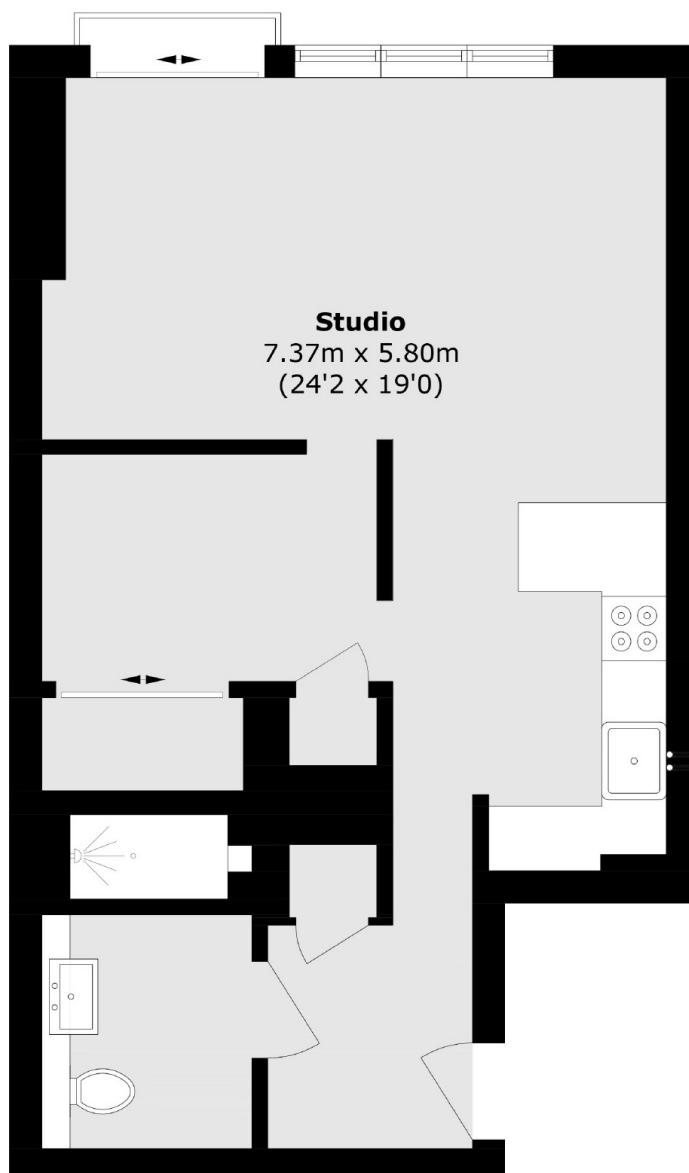
Set on the 58th floor of the prestigious Landmark Pinnacle, this studio apartment boasts sweeping views of the River Thames and City skyline. The open-plan layout is thoughtfully designed to maximise space and light. Residents enjoy access to a range of premium amenities, including a gym, lounge, cinema, and rooftop terrace. A 24-hour concierge service provides added convenience and security. Ideally located in Canary Wharf, with excellent transport links and local amenities nearby.

Heron Quays DLR, Canary Wharf Underground station, the Elizabeth Line, and the Thames Clippers river service all provide excellent transport connections to the City and beyond.

Features

- 58th Floor
- River Views and City Views
- Residents Garden Lounge
- Residents Leisure Facilities
- No Onward Chain
- Close To Station

Marsh Wall, London, E14



Total area (approx.): 53.0 sq. m (570.4 sq. ft)