



Westferry Circus, E14

£738 Per week

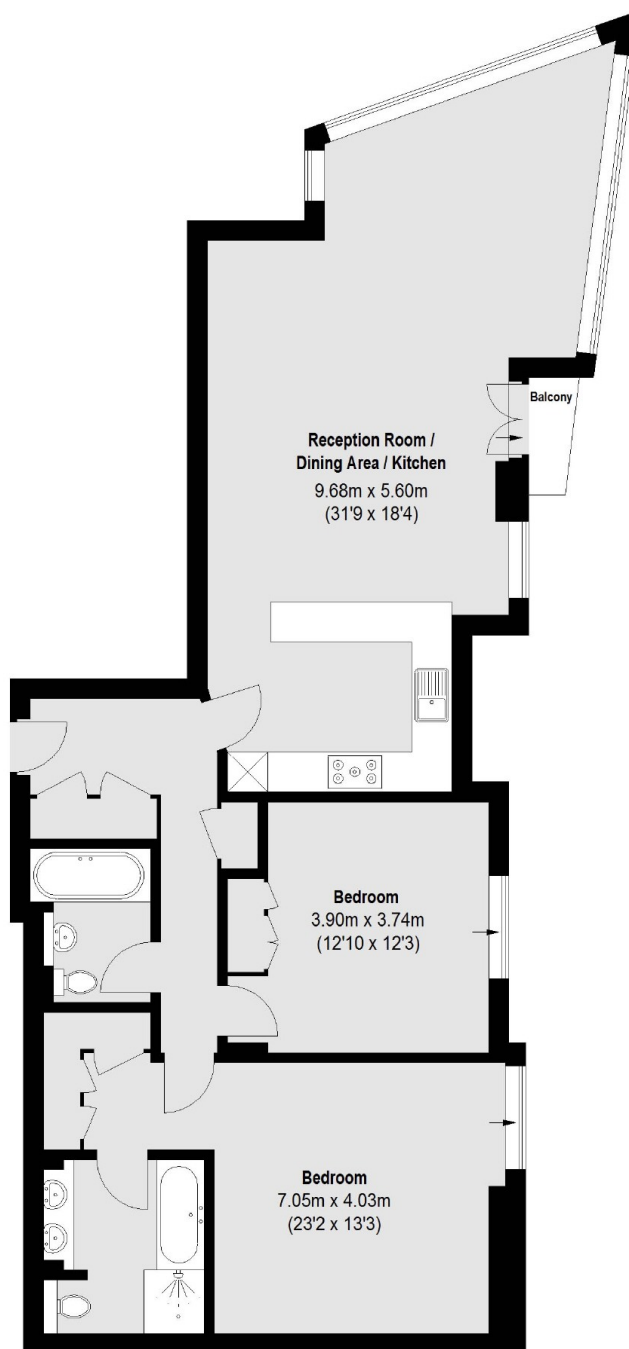
An 11th floor two bedroom two bathroom corner apartment in the popular Canary Riverside. With an open plan reception, floor to ceiling windows, built in storage and direct views of both Canary Wharf and the River Thames.

Berkeley Tower is a riverside development moments from the bars and restaurants of Westferry Circus, including Gaucho's Argentinian Steak House.

Features

- Two Bedrooms
- Two Bathrooms
- 11th Floor
- Open Plan Reception
- Concierge
- River Views

Westferry Circus, London, E14



Total area (approx.): 104.61 sq. m (1126 Sq. ft)
Balcony: 1.14 sq. m (12 Sq. ft)

Dexters

Canary Wharf
39 Westferry Road
London
E14 8JH
Lettings
0207 517 1190

Energy Rating: . We aim to make our particulars both accurate and reliable. However they are not guaranteed; nor do they form part of an offer or contract. If you require clarification on any points then please contact us, especially if you're traveling some distance to view. Please note that appliances and heating systems have not been tested and therefore no warranties can be given as to their good working order.

 **RICS** | Regulated
Estate Agent
and Letting Agent

[dexters.co.uk](https://www.dexters.co.uk)