



Ferry Street, E14

£623 Per week

A well presented property on the top floor of Boatyard Apartments. This property has two double bedrooms, a separate dressing room/home office and a balcony with direct river views.

Boatyard Apartments is set beside the Greenwich Foot Tunnel and only 0.5 miles to Crossharbour DLR with easy access to both Canary Wharf and The City.

Features

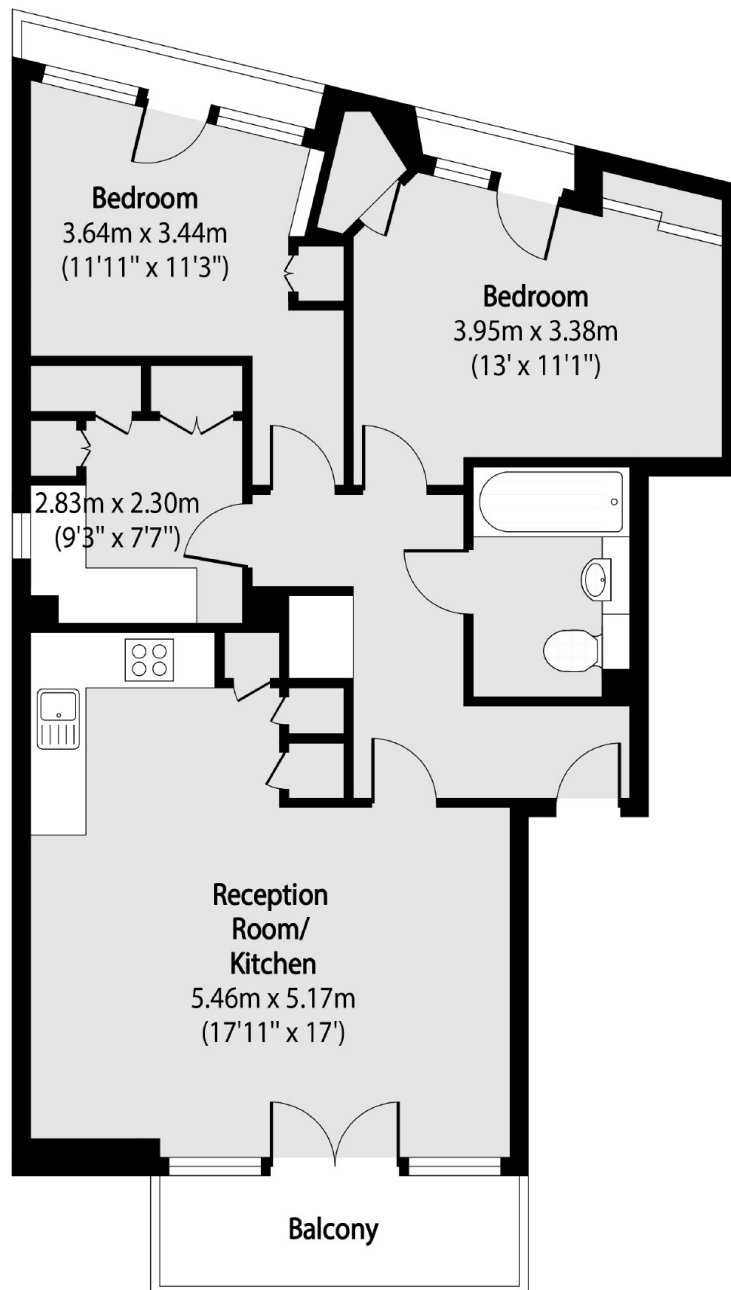
- Two Bedrooms
- Separate Dressing Room/Study
- One Bathroom
- Gated Development
- Balcony
- River Views



Ferry Street, E14



Ferry Street,
London, E14



Total area (approx): 68.98 sq m (743 sq. ft)

Balcony total area (approx): 6.69 sq m (72 sq. ft)

Dexters

Canary Wharf East
39 Westferry Road
London
E14 8JH
Lettings
020 7590 9550

Energy Rating: C. We aim to make our particulars both accurate and reliable. However they are not guaranteed; nor do they form part of an offer or contract. If you require clarification on any points then please contact us, especially if you're traveling some distance to view. Please note that appliances and heating systems have not been tested and therefore no warranties can be given as to their good working order.

RICS | Regulated
Estate Agent
and Letting Agent

dexters.co.uk