



## Ursula Gould Way, E14

### £450,000

This split-level home, set within the sought-after Hallmark Court development, boasts beautiful views of the canal. The property features a private balcony, allocated parking, a long lease, and is offered chain-free.

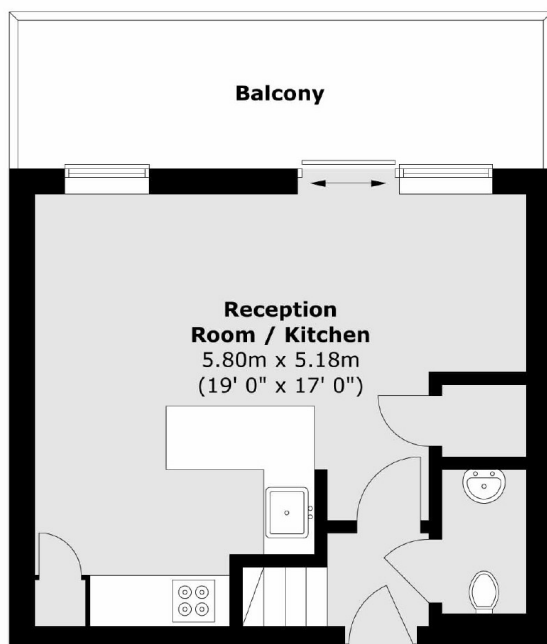
Hallmark Court is very well located, just 0.5 miles from Langdon Park DLR station.

### Features

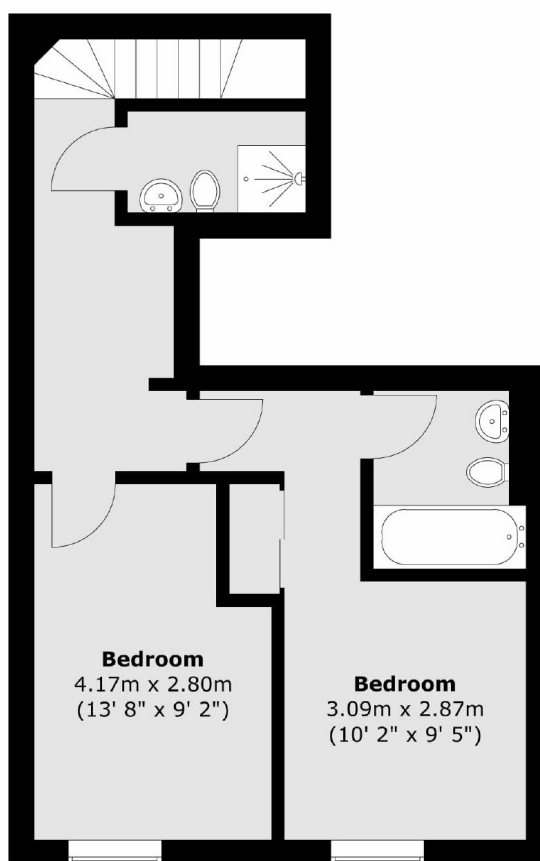
- Canal Views
- Split Level
- Chain Free
- Allocated Parking
- Long Lease
- Two Double Bedrooms

# Ursula Gould Way, London, E14

**First Floor**



**Second Floor**



Total area (approx.) : 70.7 sq. m (761 sq. ft)  
Total balcony area (approx.) : 10.8 sq. m (116 sq. ft)