

Mastmaker Road, E14

£576 Per week

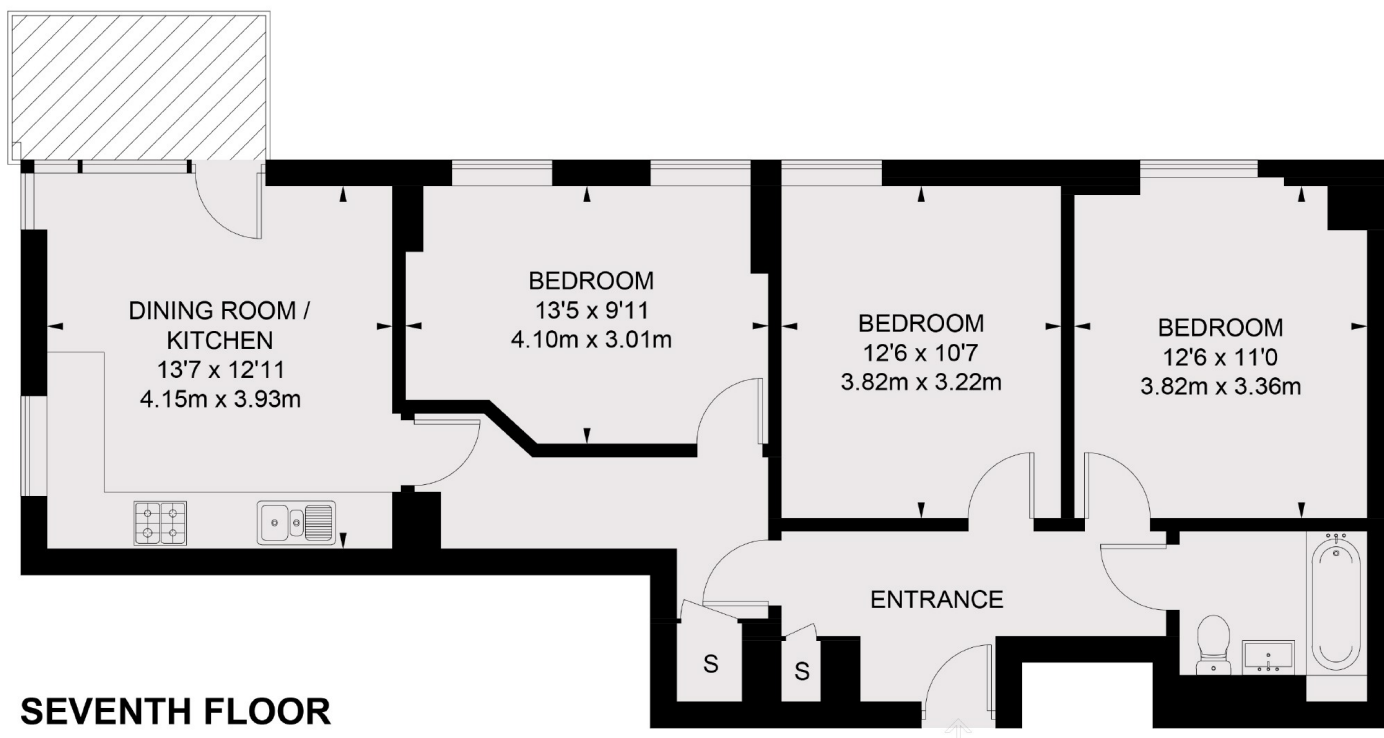
A bright three bedroom apartment on the seventh floor of this sought after development. This modern apartment has an open plan reception room, floor to ceiling windows and south-west facing skyline views.

Phoenix Heights is moments away from the bars and restaurants of South Quay, including the popular Lotus Floating Restaurant.

Features

- Three Bedrooms
- One Bathroom
- Private Balcony
- Skyline Views
- Open Plan
- Wooden Flooring

Mastmaker Road, London, E14



TOTAL APPROX. FLOOR AREA 810 SQ. FT. (75.3 SQ. M.)