



Transom Square, E14

£375,000

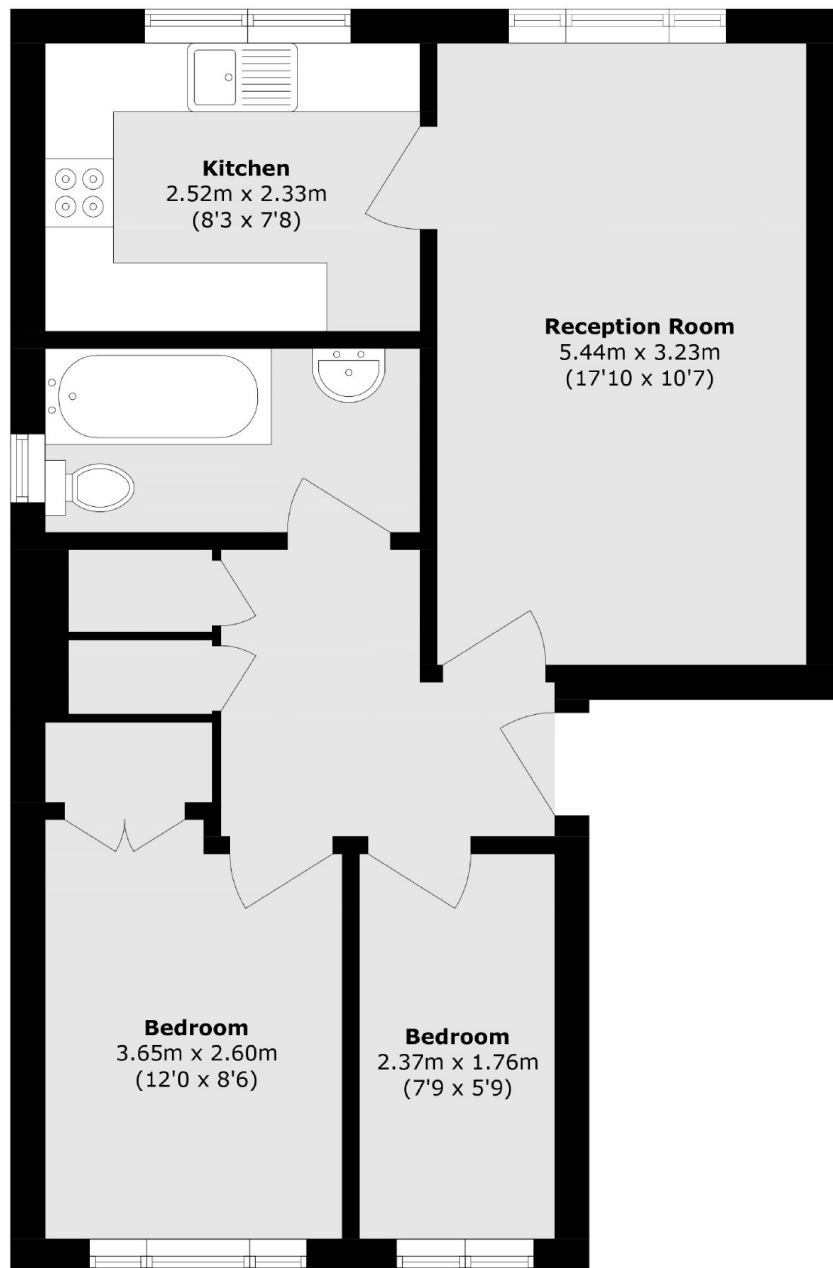
Welcome to this charming and beautifully presented two-bedroom top-floor home, located on the Isle of Dogs. This delightful property benefits from an allocated parking space, a low service charge and ground rent, a newly refitted kitchen, and a modern three-piece bathroom.

Transom Square is conveniently located just 0.3 miles from Mudchute DLR station, providing excellent transport links across the City.

Features

- Top Floor
- Two Bedrooms
- Modern Throughout
- Allocated Parking
- Re-Fitted Kitchen
- Low Service Charge

Transom Square, London, E14



Total area (approx.): 58.6 sq. m (630.7 sq. ft)