



Bonnet Street, E16

£657 Per week

A large two bedroom property in Royal Wharf. This apartment has two double bedrooms, two bathrooms and partial river views.

James Cook Building is within easy reach of Pontoon Dock station with great transport links to Bank and Canary Wharf.

Features

- Two Bedrooms
- Two Bathrooms
- Mid-Floor Position
- Large Balcony
- Concierge
- Gym and Swimming Pool

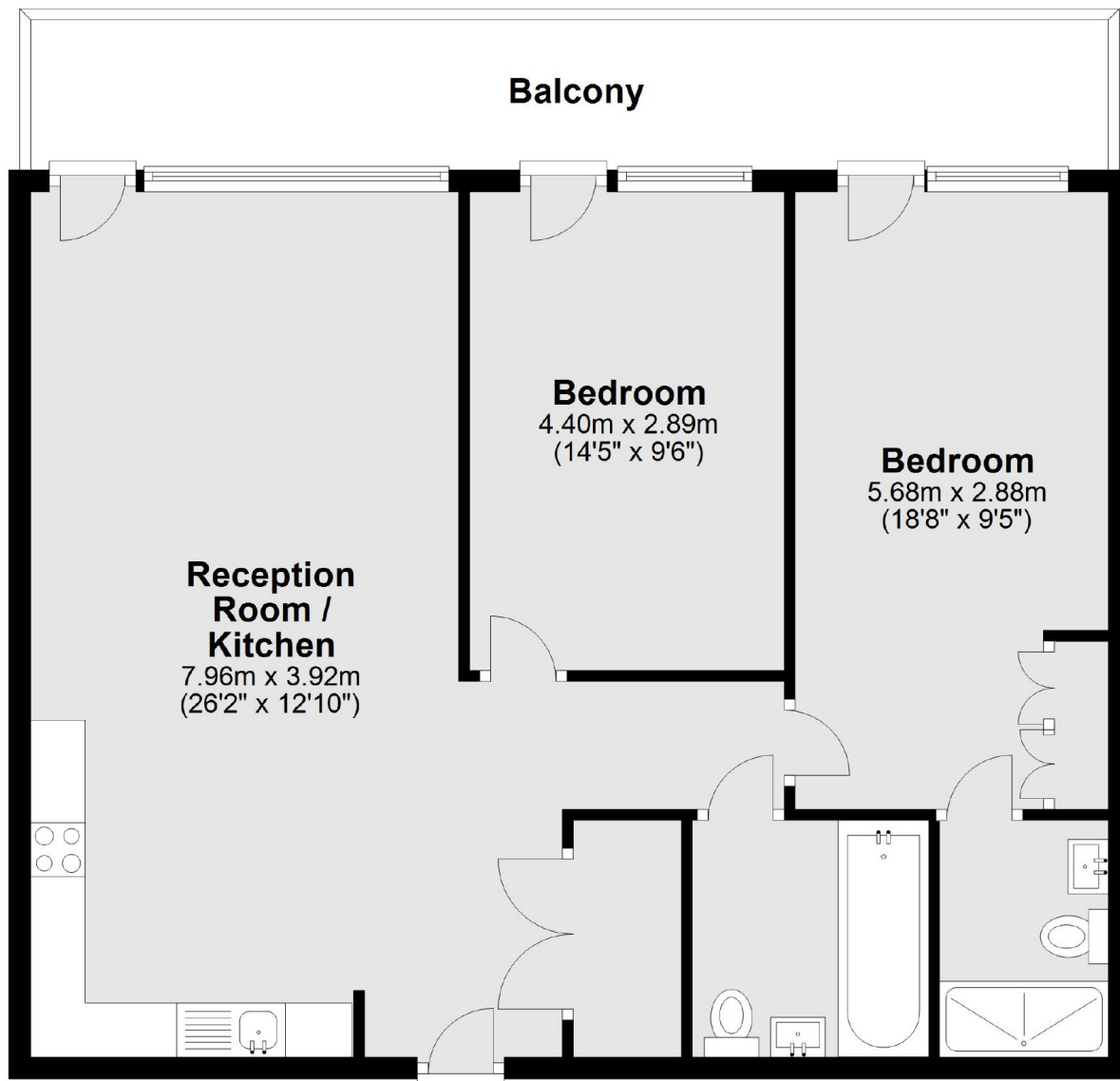


Bonnet Street, E16



Bonnet Street,
London, E16

First Floor



Main area: Approx. 78.9 sq. metres (849.3 sq. feet)
Plus balconies, approx. 14.7 sq. metres (158.1 sq. feet)

Dexters

Canary Wharf East
39 Westferry Road
London
E14 8JH
Lettings
020 7590 9550

Energy Rating: B. We aim to make our particulars both accurate and reliable. However they are not guaranteed; nor do they form part of an offer or contract. If you require clarification on any points then please contact us, especially if you're traveling some distance to view. Please note that appliances and heating systems have not been tested and therefore no warranties can be given as to their good working order.

RICS Regulated
Estate Agent
and Letting Agent

dexters.co.uk