



## Macquarie Way, E14

£1,142 Per week

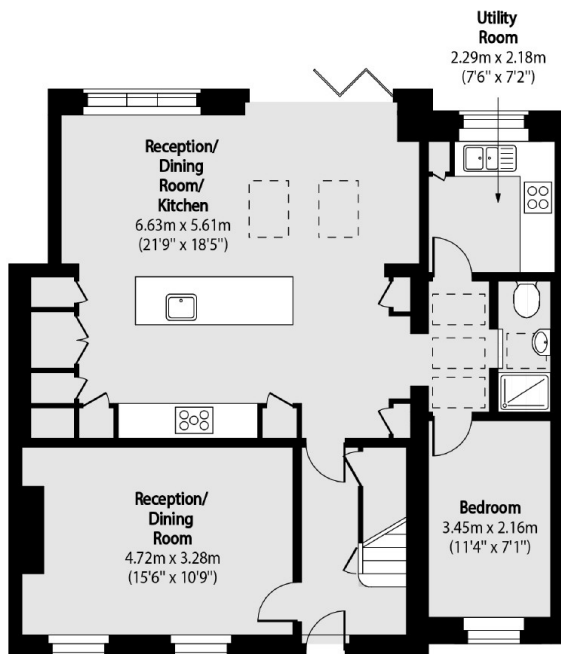
A lovely four bedroom house, located in Canary Wharf. This property offers great natural light, is spacious throughout and has a separate kitchen with a dining room. The property offers ample of storage and has a private garden and driveway. This property is perfect for a couple or family looking for a long term home.

Situated close to the River Thames with excellent transport links into Canary Wharf. The picturesque area offers easy access to nearby Mudchute farm and Island Gardens, as well as riverside amenities.

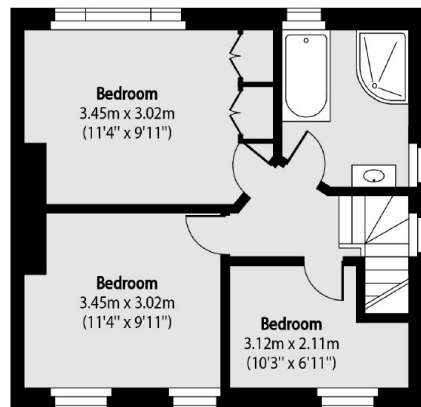
### Features

- Four Bedroom
- Separate Kitchen
- Garden
- Two Bathrooms
- Amazing Transport Links
- Unfurnished or Furnished

# Macquarie Way, London, E14



Ground Floor



First Floor

Total area (approx): 122.07 sq m (1314 sq. ft)