



Turner Street, E16

£250,000

Offered to the market chain-free, this one-bedroom home is situated within the sought-after Baythorne House development. The property features a private balcony, an open-plan kitchen and reception area, and the benefit of a concierge service.

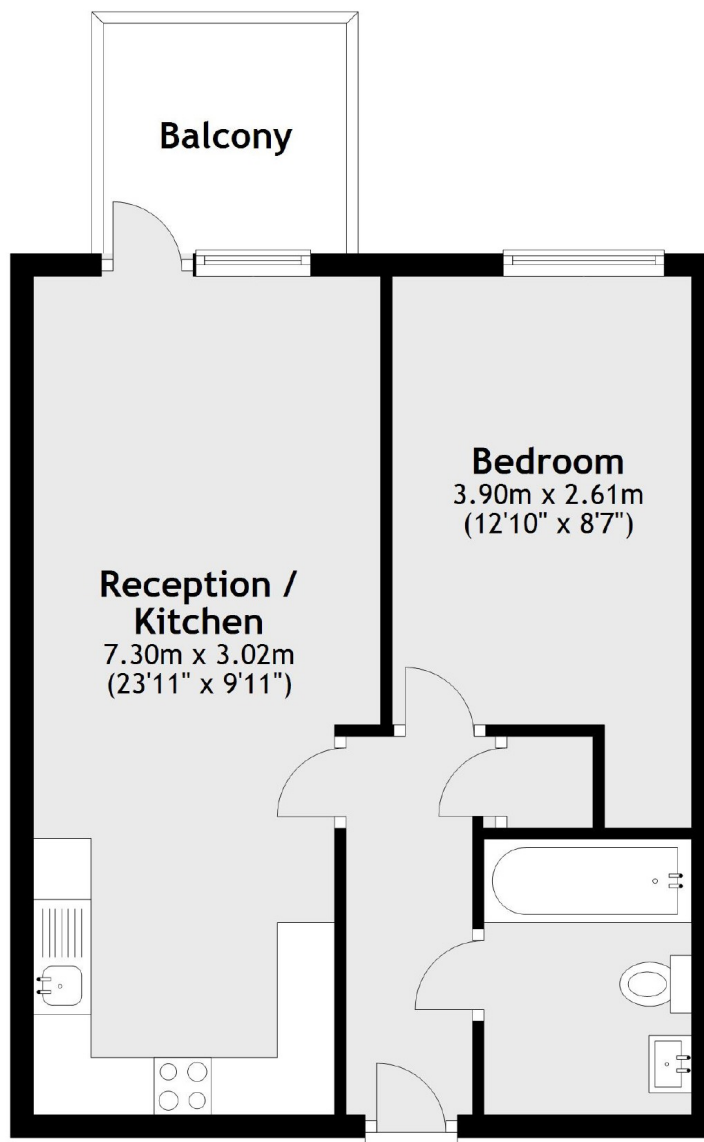
Turner Street is conveniently located just 0.5 miles from Canning Town Station, providing excellent transport links across the City.

Features

- Private Balcony
- Concierge Services
- Chain Free
- Open Planned Reception
- Close To Station
- Great Location

**Turner Street,
London, E16**

Fourth Floor



Main area: Approx. 41.8 sq. metres (449.9 sq. feet)
Plus balconies, approx. 4.5 sq. metres (47.9 sq. feet)

Dexters

Canary Wharf
39 Westferry Road
London
E14 8JH
Sales
020 7517 1199

Energy Rating: C. We aim to make our particulars both accurate and reliable. However they are not guaranteed; nor do they form part of an offer or contract. If you require clarification on any points then please contact us, especially if you're traveling some distance to view. Please note that appliances and heating systems have not been tested and therefore no warranties can be given as to their good working order.

 **RICS** | Regulated
Estate Agent
and Letting Agent

[dexters.co.uk](https://www.dexters.co.uk)