



Newport Avenue, E14

£495,000

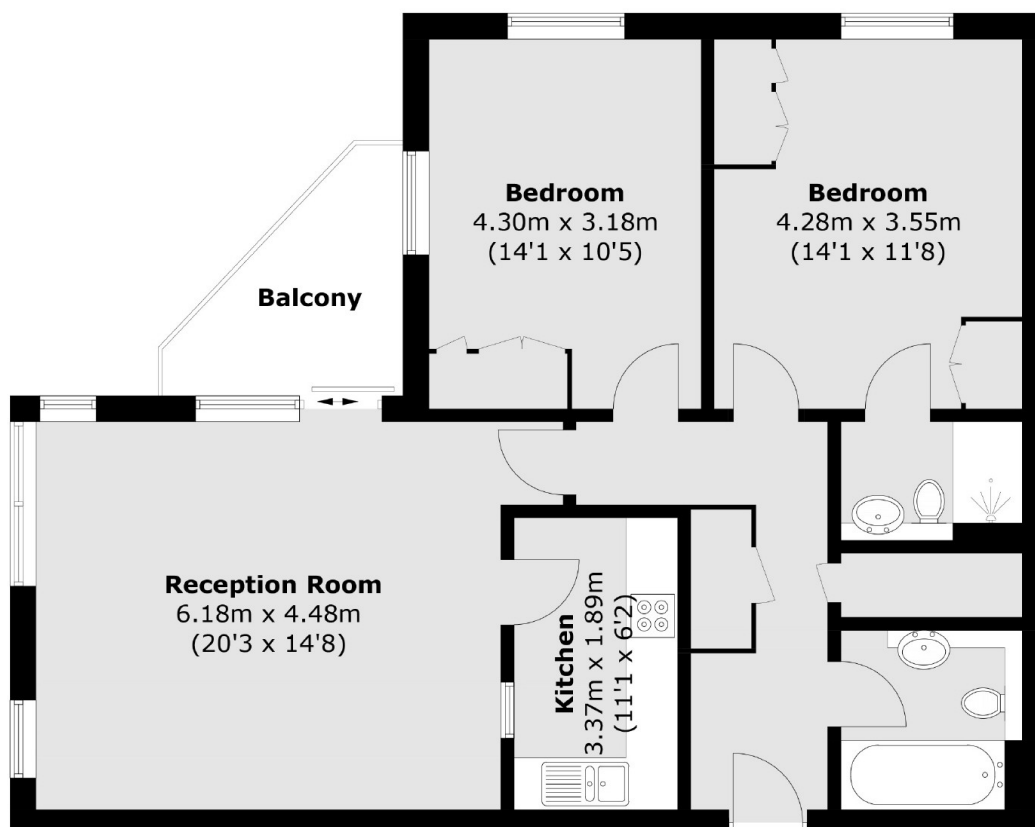
Welcome to this charming two-bedroom, river-facing home located in the highly sought-after Virginia Quay development. This delightful property boasts a private balcony, two bathrooms, allocated parking, and the benefit of a concierge service.

East India DLR station is less than 150m from Virginia Quay, providing excellent transport links across the City and beyond.

Features

- Dual Aspect Reception Room
- River Facing
- Allocated Parking
- Private Balcony
- Concierge Service
- Two Double Bedrooms

Newport Avenue, London, E14



Total area (approx.): 81.4 sq. m (876.2 sq. ft)
Balcony: 5.4 sq. m (58.1 sq. ft)