



Wheat Sheaf Close, E14

£475,000

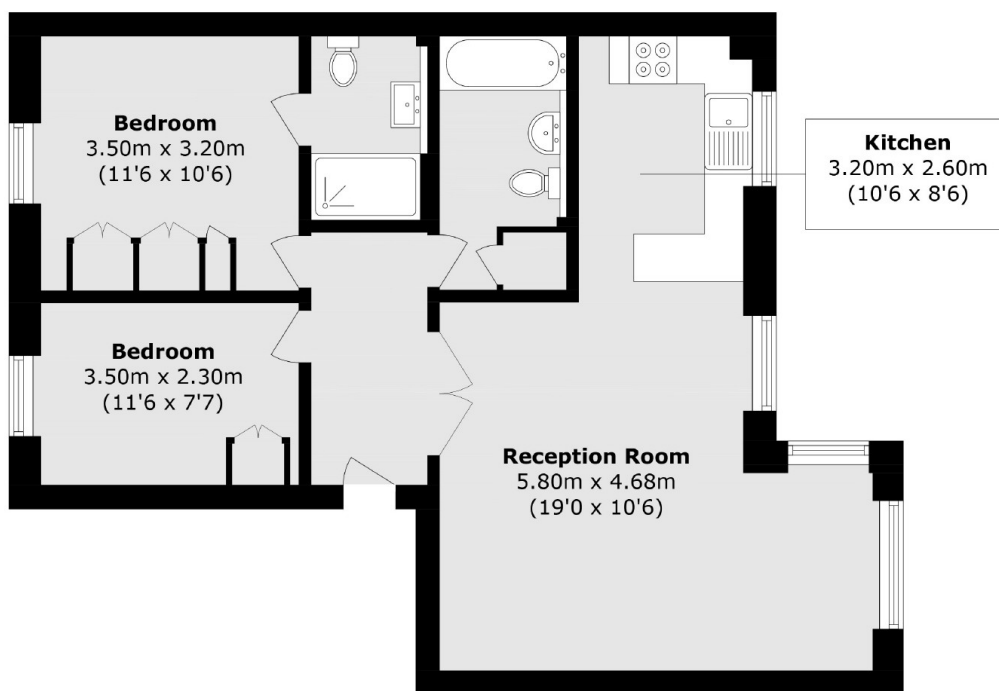
Measuring just under 700 square feet, this well-presented two-bedroom, two-bathroom home enjoys water views and is located in the sought-after Wheat Sheaf Close. The property features an open-plan reception area, a modern re-fitted kitchen and bathroom, wooden flooring throughout, residents' parking, and is offered with no onward chain.

The property is conveniently located near Mudchute DLR Station, offering excellent transport links to Canary Wharf and The City.

Features

- Re-Fitted Bathroom
- Re-fitted Kitchen
- Two Bedrooms
- Two Bathrooms
- Residents Parking
- No Onward Chain

Wheat Sheaf Close, London, E14



Total area (approx.): 64.7 sq. m (696.4 sq. ft)