



Millennium Drive, E14

£850,000

A spacious two-bedroom warehouse-style apartment offering 1,471 square feet of lateral living space. Features include a generous reception room with access to a private river-facing patio, two double bedrooms, two bathrooms, a well-appointed kitchen/dining room, and gated allocated parking.

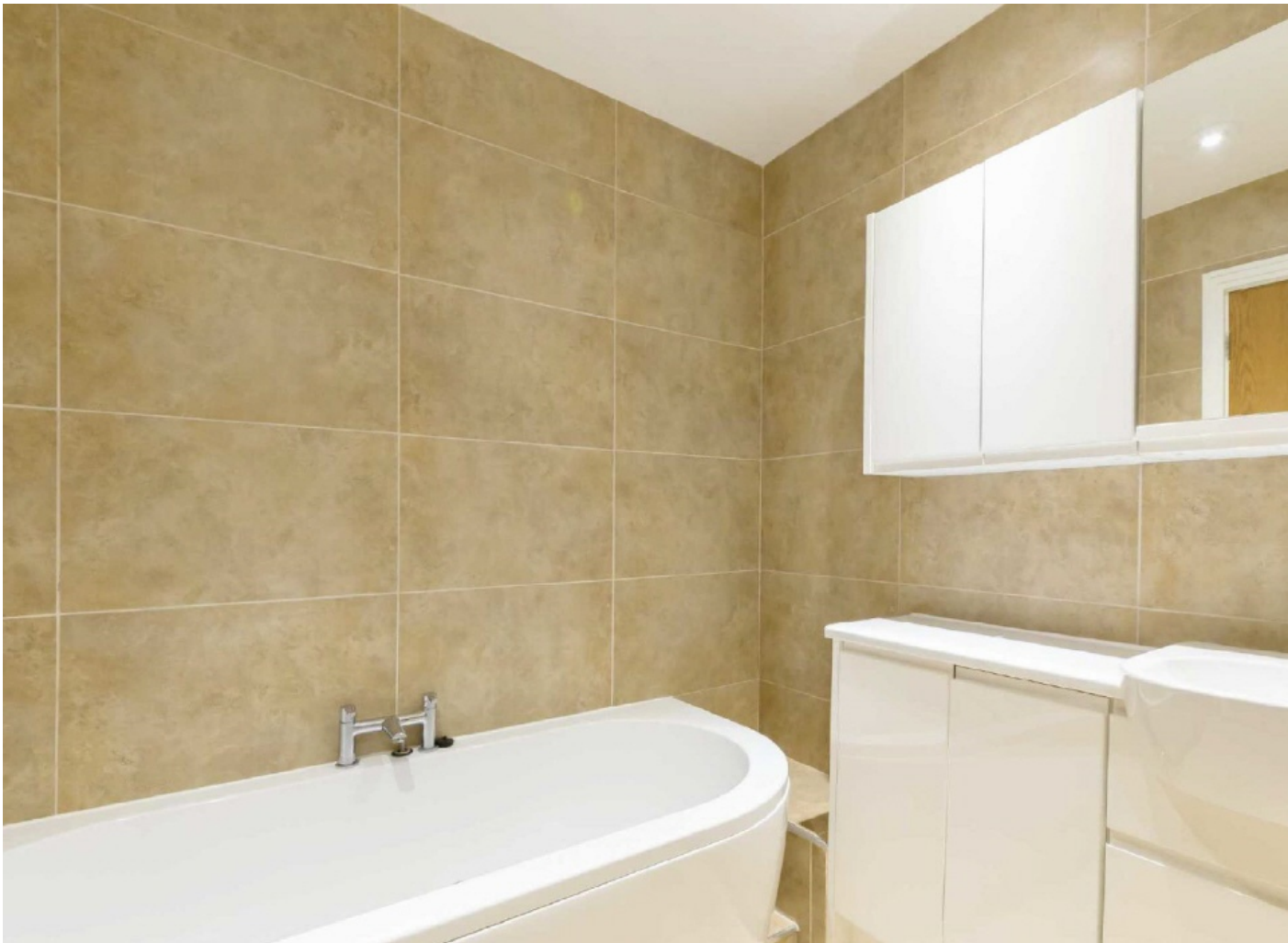
Conveniently located near Crossharbour and Island Gardens DLR stations, and within walking distance of Canary Wharf. A local bus service operates throughout the Isle of Dogs, stopping at key locations ideal for commuters.

Features

- 1471 Square Feet
- Two Double Bedrooms
- Two Bathrooms
- River Facing Patio Garden
- Allocated Parking
- Day Porter

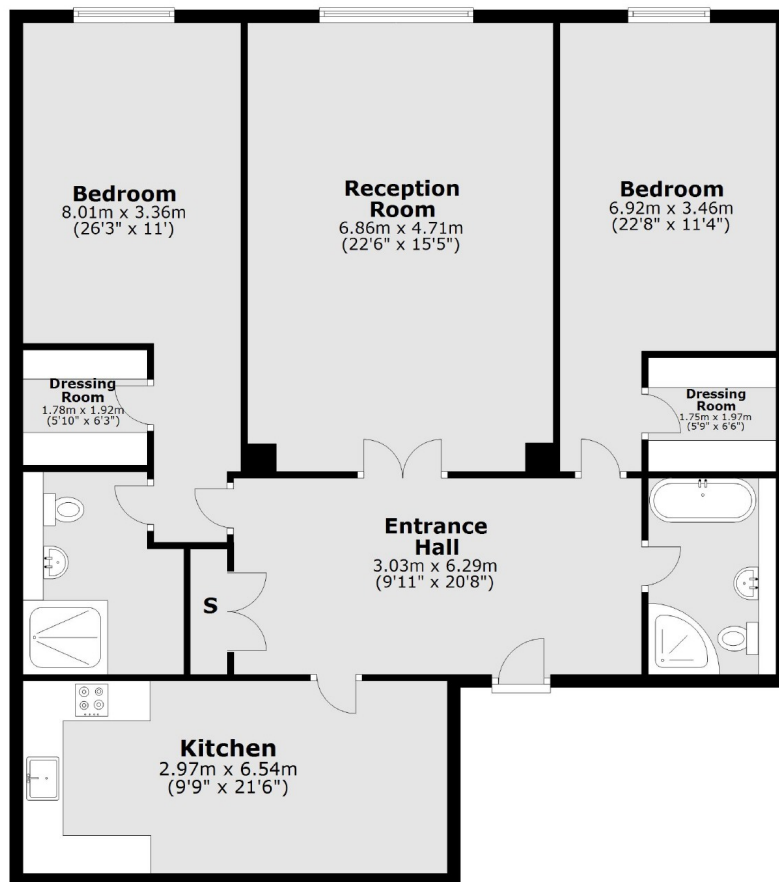


Millennium Drive, E14



Millennium Drive, London, E14

Ground Floor



Total area: approx. 136.7 sq. metres (1471.1 sq. feet)