



## Fawe Street, E14

### £675,000

Welcome to this charming two-bedroom home, set within a highly sought-after warehouse conversion. The property retains many original features, including large windows, exposed brickwork, and impressive double-height ceilings. Additional benefits include over 930 square feet of living space, a low service charge, and the property is offered chain-free.

Fawe Street is conveniently located just 0.2 miles from Langdon Park DLR station, providing excellent transport links across the City.

### Features

- Warehouse Conversion
- 930 Square Feet
- Low Service Charge
- Large Windows
- Chain Free
- Two Double Bedrooms





## Fawe Street, E14

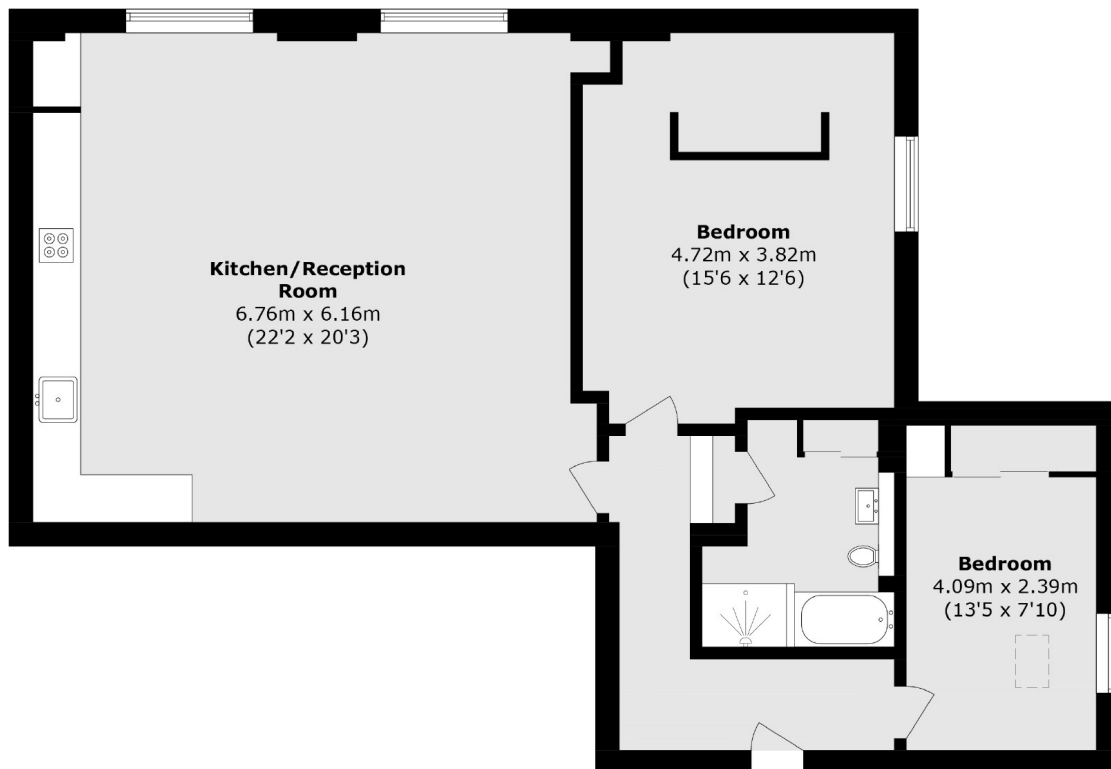
This historic warehouse conversion on Fawe Street dates back to the 18th century and originally formed part of the Spratt's dog biscuit factory.

The building was converted into residential use in the 1970s and has remained so ever since, offering a unique blend of industrial heritage and contemporary living.





# Fawe Street, London, E14



Total area (approx.): 87 sq. m (936.4 sq. ft)