



Hutchings Street, E14

£325,000

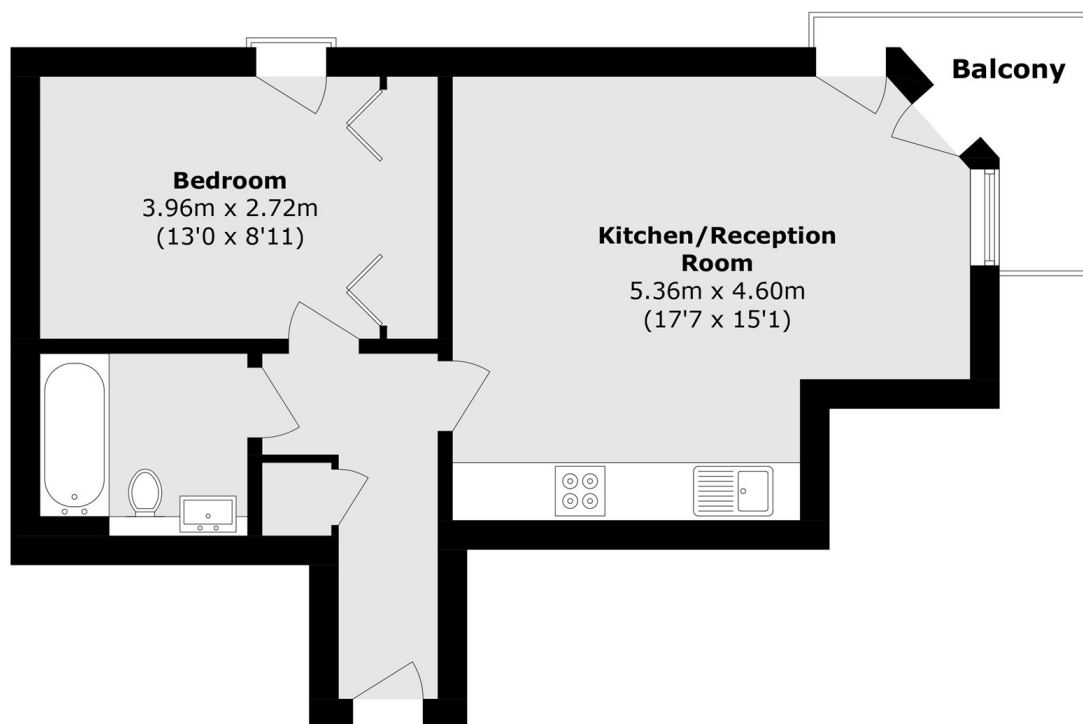
A beautifully presented one-bedroom home located within the highly sought-after gated development of Seacon Wharf. The property benefits from a private balcony with river views, residents' leisure facilities, a concierge service, and a lease of over 900 years.

Ideally located in Canary Wharf, the property offers easy access to an excellent selection of shops, supermarkets, restaurants, and bars. With the DLR, Jubilee Line, and Elizabeth Line all nearby, residents enjoy outstanding transport links and swift connections across London.

Features

- 470 Square Feet
- River view
- Residents Leisure Facilities
- Concierge Services
- Gated Development
- 900+ year lease

Hutchings Street, London, E14



Total area (approx.): 43.7 sq. m (470.3 sq. ft)
Balcony area(approx.): 3.6 sq. m (38.7 sq. ft)