



Silvertown Way, E16

£600,000

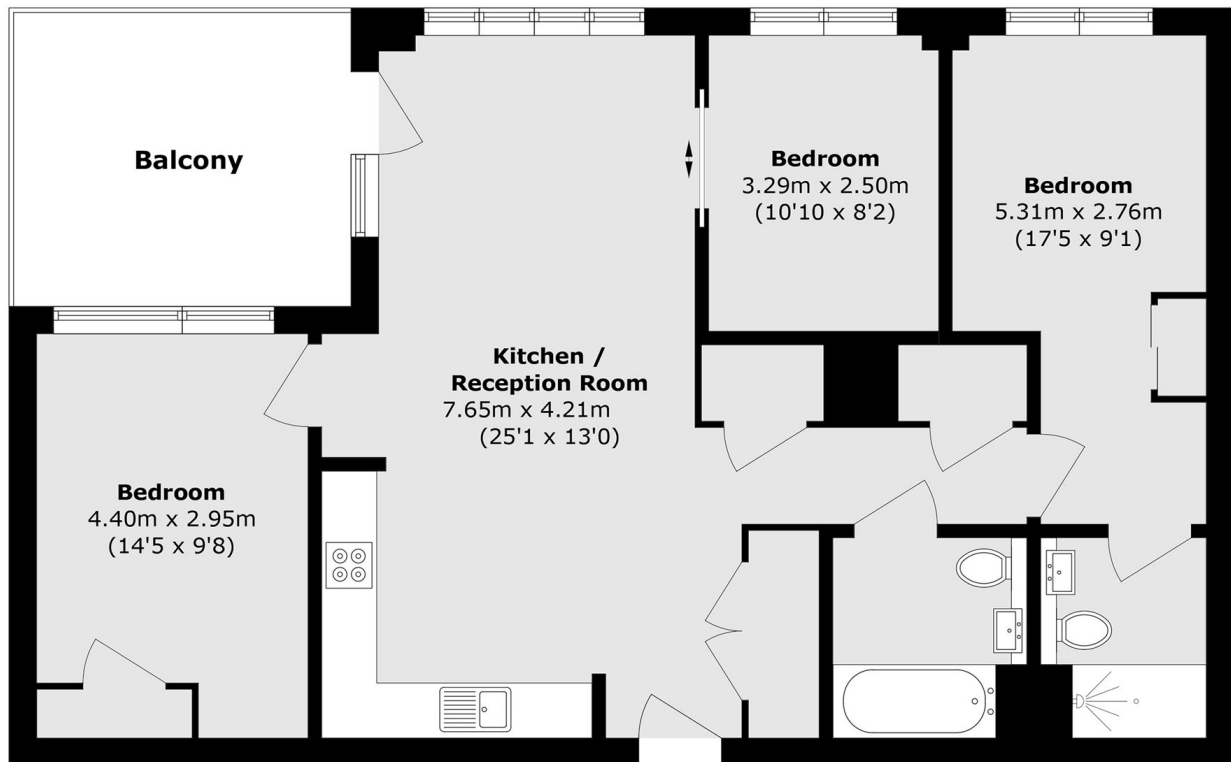
Welcome to this charming three-bedroom home located in the highly sought-after Effra Gardens development. This modern property features a spacious private balcony, two stylish bathrooms, and access to a dedicated concierge service. Contemporary throughout, it offers both comfort and convenience in a prime location.

Effra Gardens is ideally positioned just 0.1 miles from Canning Town Station, providing excellent transport links across the City and beyond.

Features

- Modern Throughout
- Concierge Service
- No Onward Chain
- Three Double Bedrooms
- Two Bathrooms
- Close To Station

Silvertown Way, London, E16



Total area (approx.): 85.2 sq. m (917.1 sq. ft)

Balcony area (approx.): 7.9 sq. m (85.0 sq. ft)