

Baltimore Wharf, E14

£900 Per week

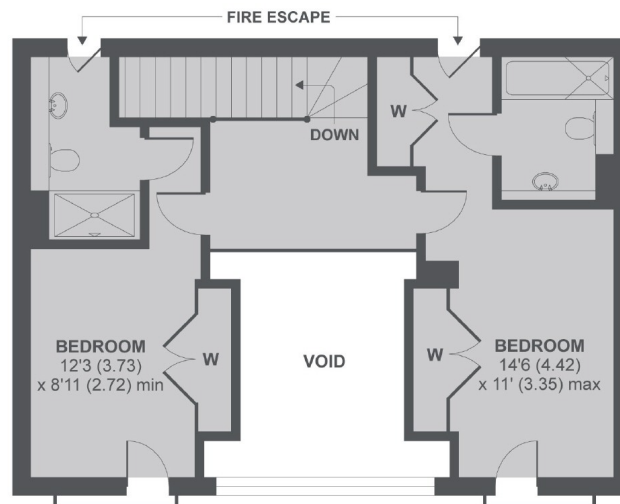
A two bedroom duplex apartment on the eleventh floor of this prestigious dockside development. This unique apartment has an open plan reception room, marble bathrooms and spectacular views.

Baltimore Wharf Is moments away from the bars and restaurants of South Quay, including the popular Lotus Floating Restaurant.

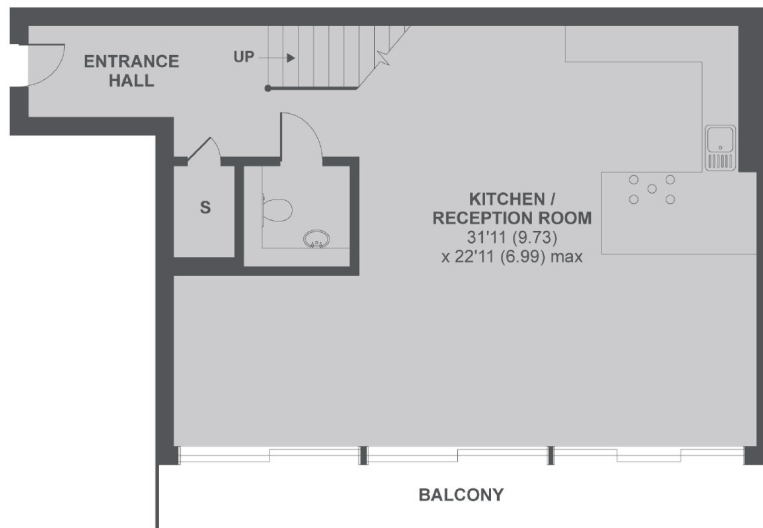
Features

- Two Bedroom
- Two Bathroom
- Duplex Penthouse
- Private Balcony
- Residents Gym
- Concierge

Baltimore Wharf, London, E14



2nd Floor



1st Floor

Baltimore Wharf, E14

MAIN HOUSE APPROX FLOOR AREA 1363 SQ.FT 126.6 SQ.M (EXCLUDES VOID)

Copyright nichecom.co.uk 2017 REF : 232103

Contact

To arrange a viewing call our office on the number below or visit our website.



Energy Rating: C. We aim to make our particulars both accurate and reliable. However they are not guaranteed; nor do they form part of an offer or contract. If you require clarification on any points then please contact us, especially if you're traveling some distance to view. Please note that appliances and heating systems have not been tested and therefore no warranties can be given as to their good working order.