



Geere Road, E15

£575,000

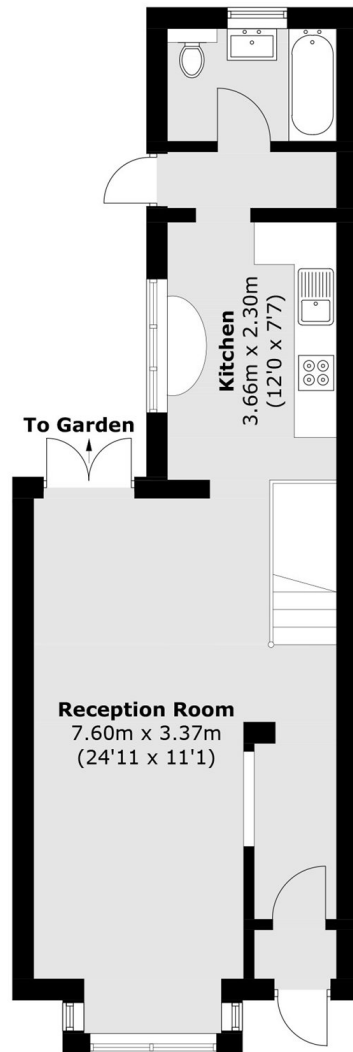
A beautifully presented terraced house on Geere Road, offering 908 square feet of internal space. The property features two bathrooms, a spacious private garden, and is ideally located just moments from the station.

Geere Road is conveniently located just 0.4 miles from Plaistow Station, which provides excellent transport links across the City.

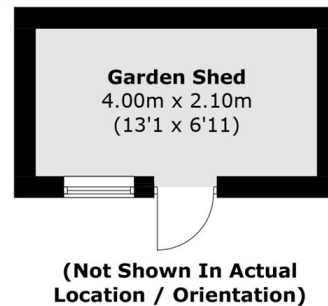
Features

- 908 Square Feet
- Large Private Garden
- Freehold House
- Three Bedrooms
- Two Bathrooms
- Beautifully Presented

Geere Road, London, E15



Ground Floor



First Floor

Total area (approx.): 85.4 sq. m (919.2 sq. ft)
Garden Shed: 8.5 sq. m (91.5 sq. ft)