

Pan Peninsula Square, E14 £300,000

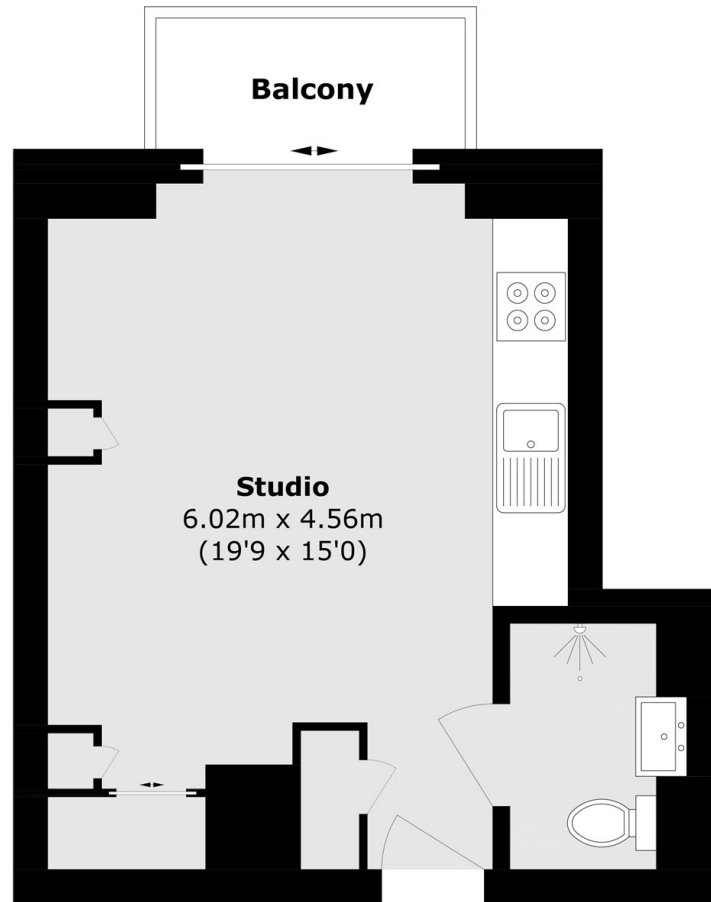
We are delighted to offer this home to the market within the sought-after Pan Peninsula development. The property features a private balcony, an open-plan living area with direct access to the balcony, residents' leisure facilities, a concierge service, and is offered with no onward chain.

Ideally located within the Canary Wharf Estate, the property benefits from an excellent selection of bars, restaurants and entertainment, as well as superb transport links including Canary Wharf Station (Jubilee Line, Elizabeth Line and DLR) and South Quay DLR station, providing easy access to the City and Central London.

Features

- 313 Square Feet
- 29th Floor
- Water Views
- Leisure Facilities
- Concierge Services
- Private Balcony

Pan Peninsula Square, London, E14



Total area (approx.): 29.1 sq. m (313.2 sq. ft)

Balcony area (approx.): 3.1 sq. m (33.3 sq. ft)