



Burrells Wharf Square, E14

£450,000

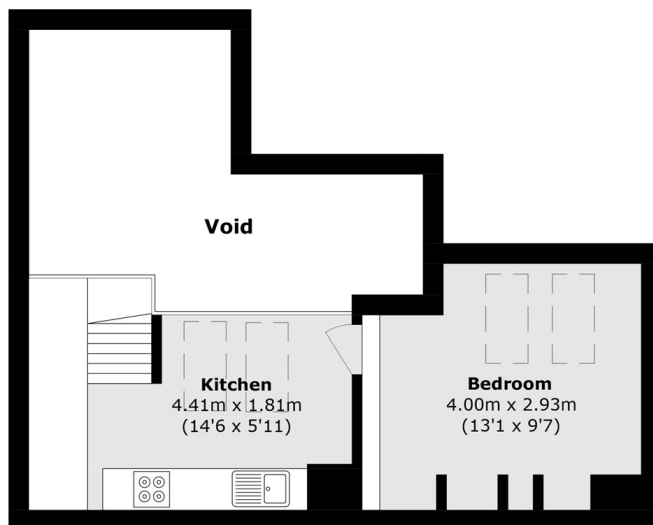
A two bedroom home offering 966 Sq.Fr of ample living space over two floors offered to the market on a chain free basis.. Features to include a private terrace, concierge service, residents facilities with pool, gym and sauna, secure allocated parking and a share of freehold.

Burrells Wharf is just 0.1 miles from Mast House Terrace Pier where you can hop on an Uber boat around the City. Alternatively, Mudchute DLR station is just 0.5 miles away.

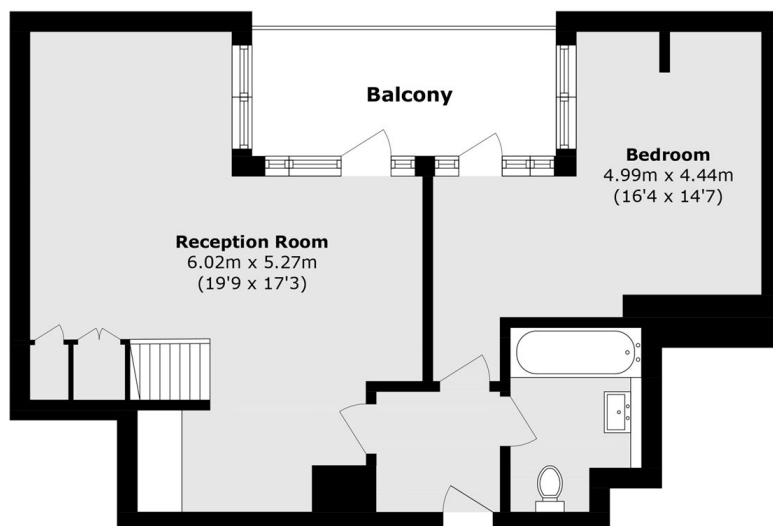
Features

- Burrells Wharf Development
- 966 Sq.Ft
- Private Terrace
- Secure Allocated Parking
- Concierge Service
- Share Of Freehold

Burrells Wharf Square, London, E14



Mezzanine



Fourth Floor

Total area (approx.): 89.8 sq. m (966.6 sq. ft)
(Excluding Void)

Balcony area (approx.): 9.5 sq. m (102.2 sq. ft)