



## Ashdown Walk, E14

### £469,950

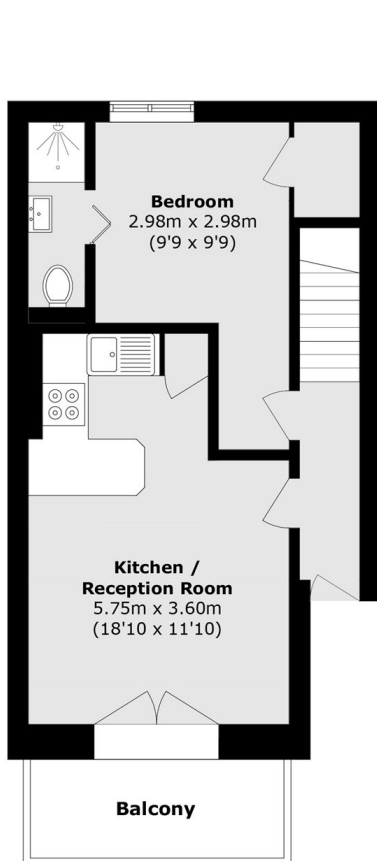
We are delighted to offer this well-presented three-bedroom home to the market, situated on Ashdown Walk. The property benefits from two private balconies, three bathrooms, and is offered for sale on a chain-free basis.

Ashdown Walk is just 0.4 miles from Mudchute DLR station, offering excellent transport links throughout the City and beyond.

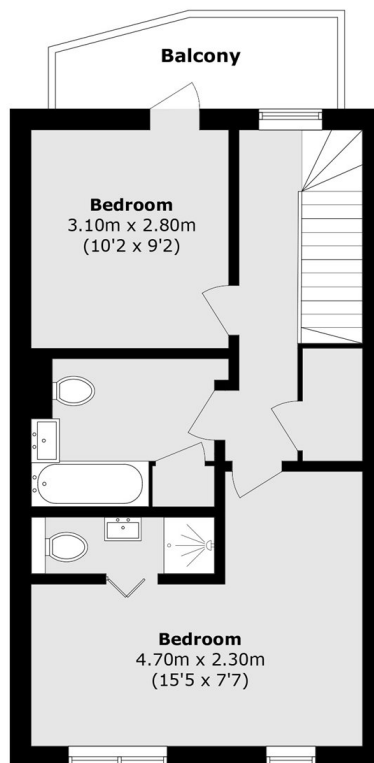
### Features

- Three Double Bedrooms
- Three Bathrooms
- Two Private Balconies
- Renovated Throughout
- Chain Free
- Parking

# Ashdown Walk, London, E14



**Ground Floor**



**First Floor**

Total area (approx.): 80.0 sq. m (861.1 sq. ft)

Balcony area (approx.): 9.7 sq. m (104.4sq. ft)