



Goodluck Hope Walk, E14

£600,000

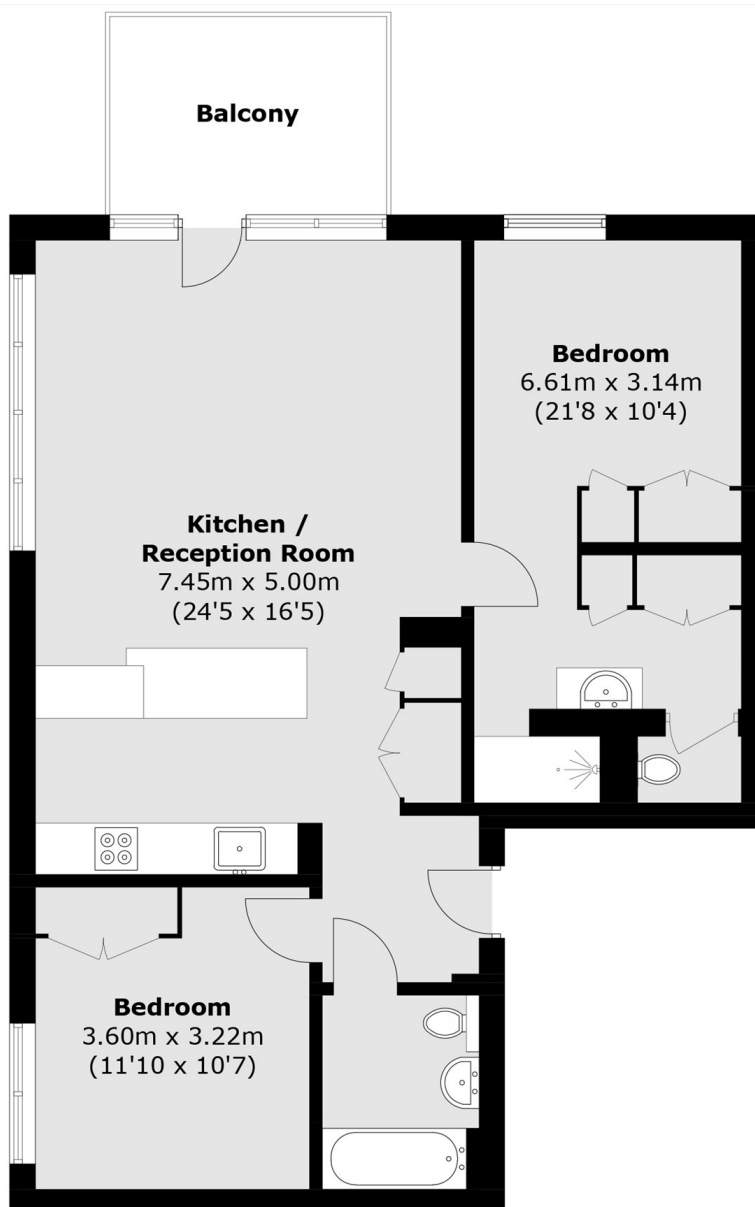
Offered to the market on a chain free basis is this well-proportioned two bedroom home, extending to approximately 846 sq ft of internal living space. The property features a private balcony with water views, a dual-aspect open-plan reception room, residents' leisure facilities and an on-site concierge service.

Ideally positioned on the banks of the River Thames in E14, Goodluck Hope offers excellent transport links. Canning Town Station (Jubilee Line & DLR) and the Elizabeth Line from Custom House provide swift access to Canary Wharf, the City of London and the West End.

Features

- 846 Square Feet
- Private Balcony
- Water Views
- Residents Leisure Facilities
- Concierge Service
- No Onward Chain

Goodluck Hope Walk, London, E14



Total area (approx.): 78.6 sq. m (846.0 sq. ft)
Balcony area : 7.6 sq. m (81.8 sq. ft)