



## Premiere Place, E14

£375,000

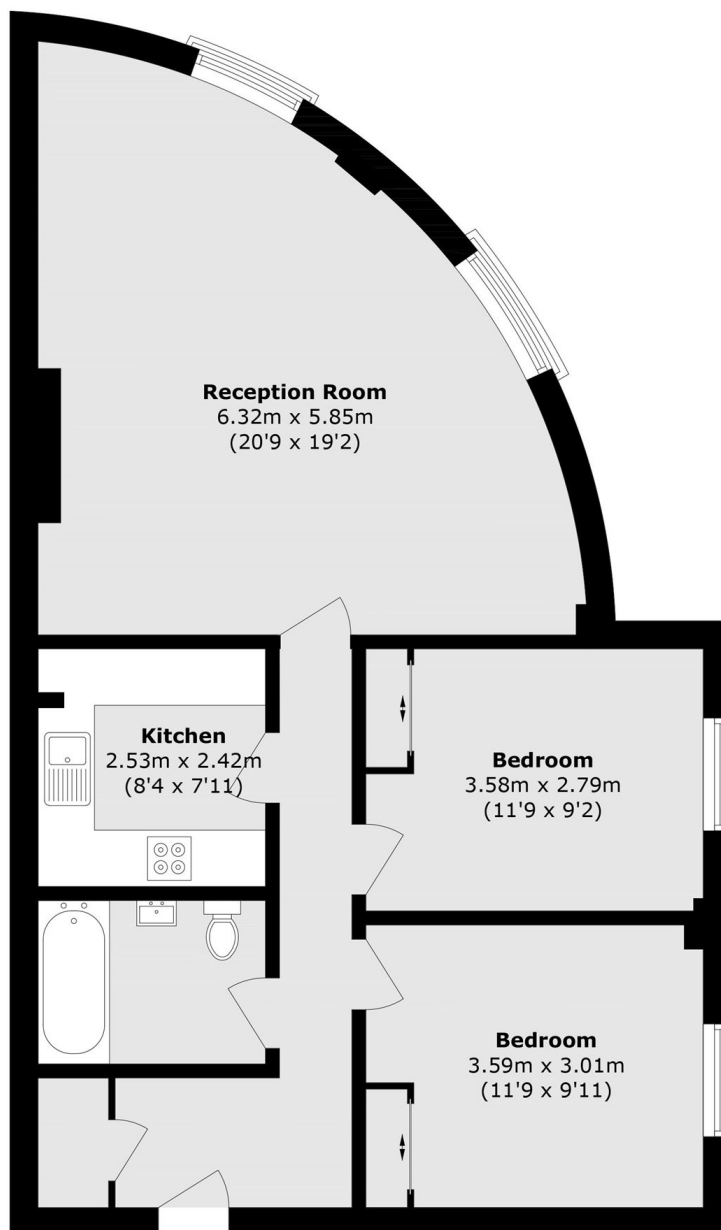
Offered to the market chain free is this two double bedroom apartment, offering 765 sq. Ft. Of well-proportioned living space and ideally located for Canary Wharf. Features include a secure entry phone system, lift access, concierge service and allocated parking.

The property benefits from excellent transport links, with Westferry DLR Station just 0.1 miles away, providing easy access to Canary Wharf, the City and beyond. Canary Wharf Underground Station (Jubilee line) and the Elizabeth Line are also within close proximity, offering swift connections to central London and across the capital.

### Features

- 765 Square Feet
- Two Double Bedrooms
- Sixth Floor
- Allocated Parking
- Concierge Service
- No Onward Chain

# Premiere Place, London, E14



Total area (approx.): 71.1 sq. m (765.3 sq. ft)