



Crossharbour Plaza, E14

£520,000

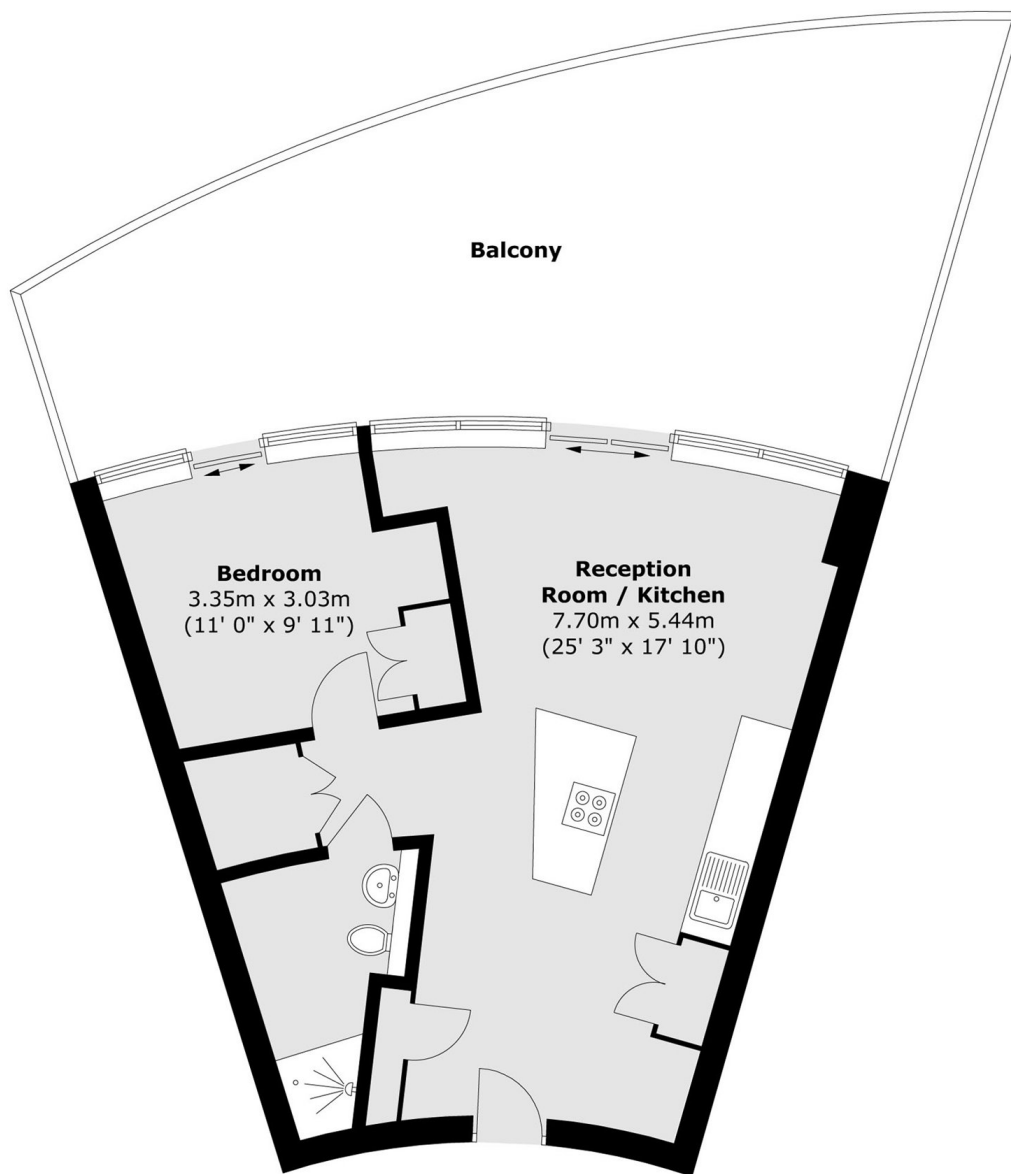
Located on the 37th floor of the sought-after Arena Tower, this one-bedroom home is within walking distance of Canary Wharf. The property features a large terrace, open-plan reception, residents' leisure facilities, concierge service, and is offered with no onward chain.

Arena Tower is walking distance to Canary Wharf which offer good links to the City by Elizabeth Line and DLR stations. Residents have access to the largest residential gym and leisure facility in London, which includes a 25-meter swimming pool, a fully-equipped cardio suite, sauna, and spa pool. Arena Tower also boasts a split-level brasserie, bar, and restaurant, along with an exclusive private residents' lounge featuring a large-screen cinema room.

Features

- 552 Square Feet
- Large Terrace
- 37th Floor
- Residents Leisure Facilities
- Concierge Service
- Dock and Canary Wharf Views

Crossharbour Plaza, London, E14



Total area (approx.) : 51.3 sq. m (552 sq. ft)
Total balcony area (approx.) : 31.6 sq. m (340 sq. ft)