



## Copenhagen Place, E14

### £400,000

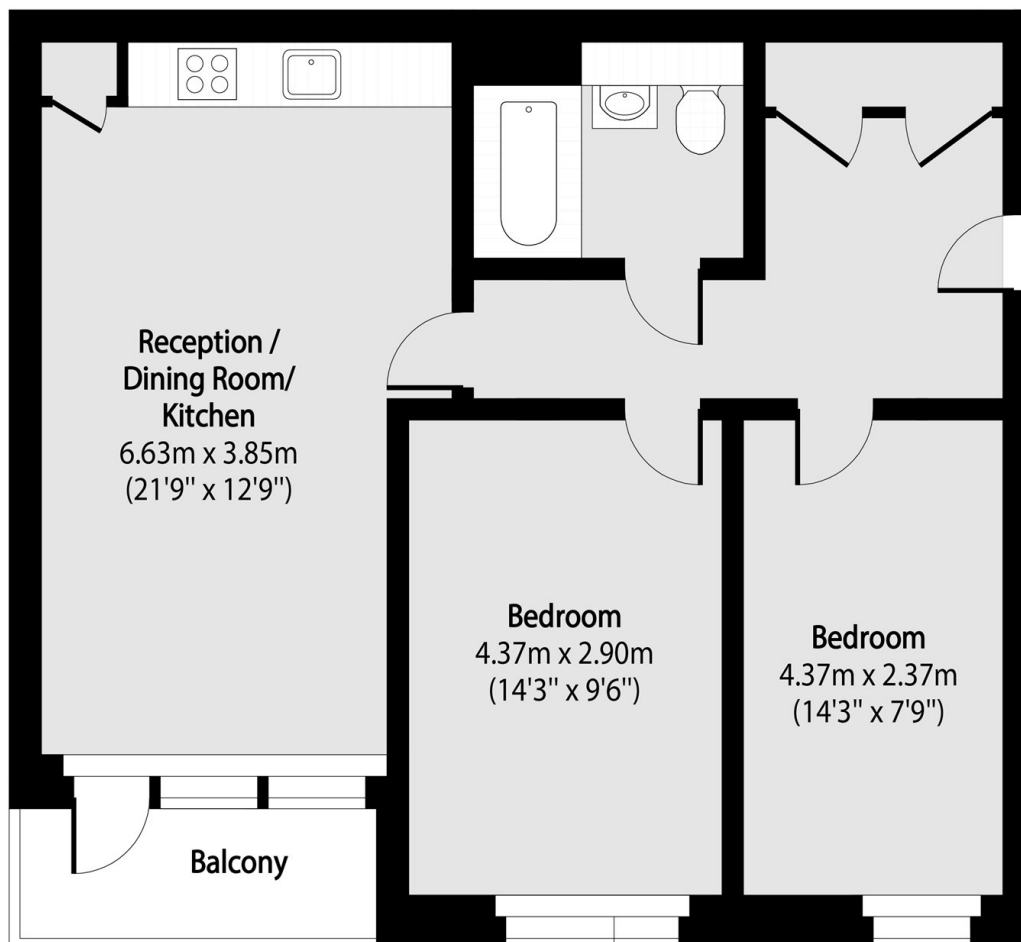
Offered to the market is this spacious two-bedroom apartment, set within a private gated development and ideally located close to the Limehouse Cut canal. The property features a bright open-plan reception area with a recently re-fitted kitchen, as well as a secure entry phone system.

Carmine Wharf is within a short walk of Limehouse and Westferry DLR stations, as well as Mile End Underground station, providing excellent transport links to Canary Wharf and the City.

### Features

- 709 Square Feet
- 2 Bedroom
- Gated Development
- Private balcony
- Refitted Kitchen
- Refitted Bathroom

# Copenhagen Place, London, E14



Total area (approx): 65.89 sq m (709 sq. ft)

Balcony total area (approx): 3.96 sq m (43 sq. ft)