



## Hertsmere Road, E14

£550,000

Offered to the market chain-free, this well-presented one-bedroom home is located within the sought-after West India Quay development, ideally positioned for Canary Wharf. The property benefits from a concierge service, impressive views across London, and a lease with over 900 years remaining.

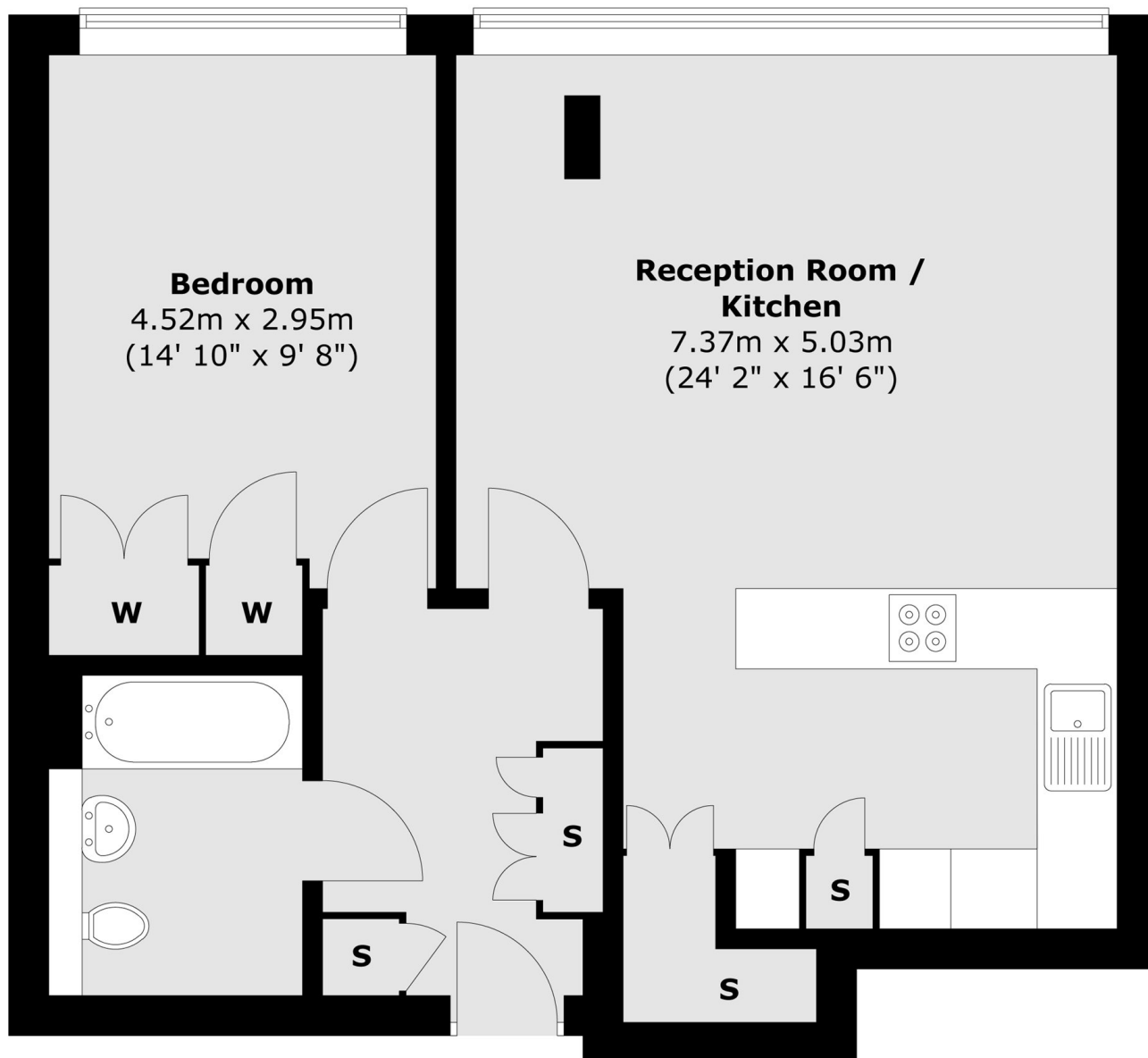
West India Quay is one of the residential developments closest to Canary Wharf, set in the heart of the Docklands. The immediate area offers a wide selection of bars, restaurants, and a cinema complex, and is just moments from the vibrant shopping and dining options of Canary Wharf.

### Features

- 620 Square Feet
- 29th Floor
- Open Plan Reception
- Concierge Service
- 900+ Year Lease
- Chain Free

# Hertsmere Road, London, E14

## Twenty Ninth Floor



Total area (approx.) : 57.5 sq. m (619 sq. ft)