



Barrier Point Road, E16

£300,000

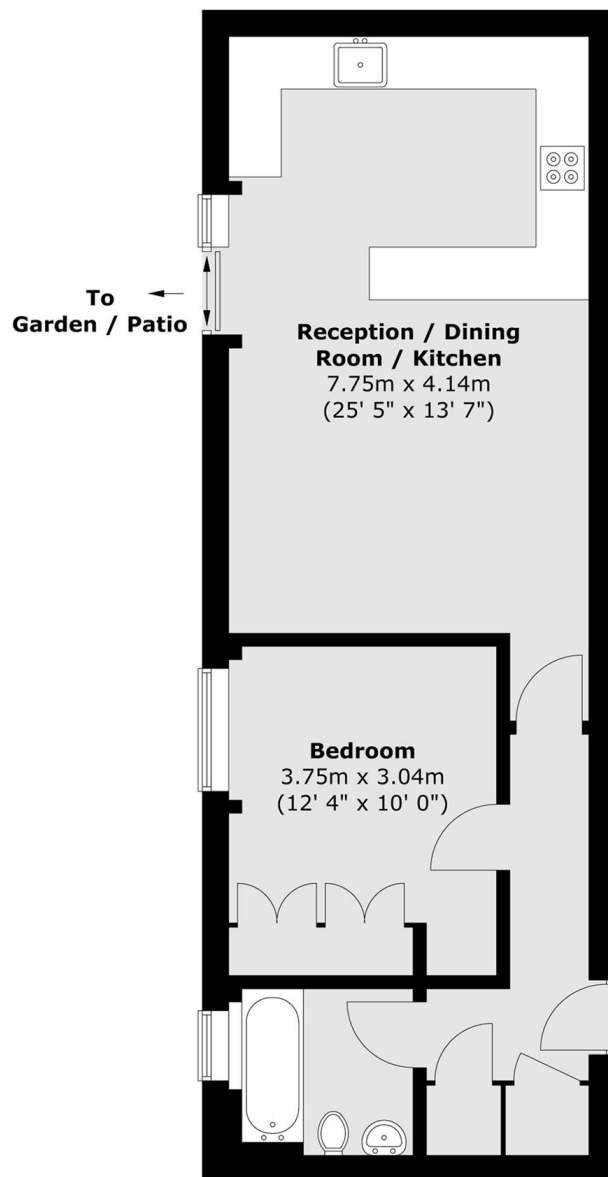
We are pleased to present this one-bedroom apartment, offering 566 sq ft of internal space. The property features patio access from the living area, providing plenty of natural light, and a bedroom overlooking the development's private garden, with secure allocated parking included. Residents benefit from a 24-hour concierge and a gym, while Royal Wharf and its restaurants are nearby, along with excellent transport links.

Barrier Point Road is ideally situated just 0.2 miles from Pontoon Dock DLR station, providing excellent transport links to the City and Canary Wharf. The property location also provides easy access to river transport.

Features

- 566 Square foot
- One Bedroom
- Communal Garden
- Allocated Parking
- Concierge Services
- Residents Gym

Barrier Point Road, London, E16



Total area (approx.) : 52.6 sq. m (566 sq. ft)