



Newton Place, E14

£490,000

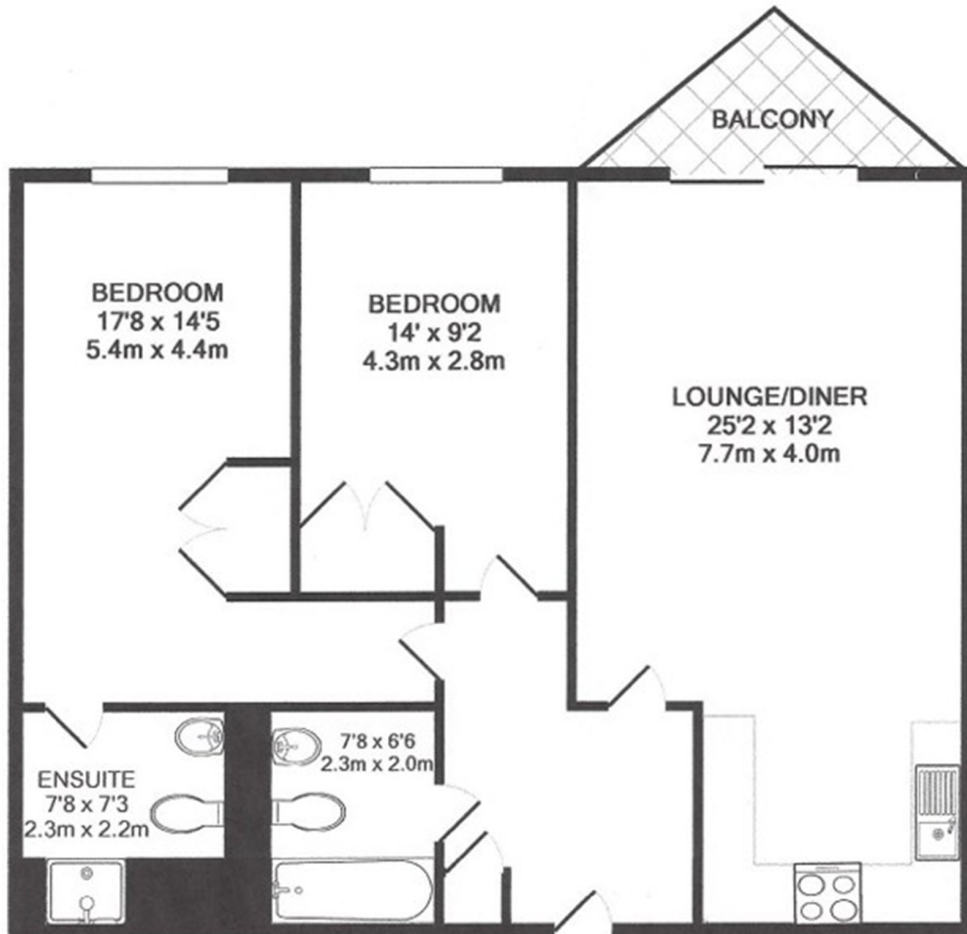
Offered to the market within a sought-after riverside development is this two-bedroom apartment, boasting direct views of the river. The property benefits from a private balcony, an abundance of natural light, and secure allocated parking. Residents also have access to a 24-hour concierge service and an on-site gym.

The Apollo Building is ideally located within easy reach of both Canary Wharf and the City. Mudchute DLR station is approximately half a mile from the development. A wide variety of shops, bars and restaurants can also be found in Canary Wharf, along with access to the Jubilee line.

Features

- 774 Square Feet
- Gated Riverside Development
- Secure Allocated Parking
- River Views
- 24 Hour Concierge
- Residents Gym

Newton Place, London, E14



TOTAL APPROX. FLOOR AREA 774 SQ.FT. (71.9 SQ.M.)