

Marsh Wall, E14

£650,000

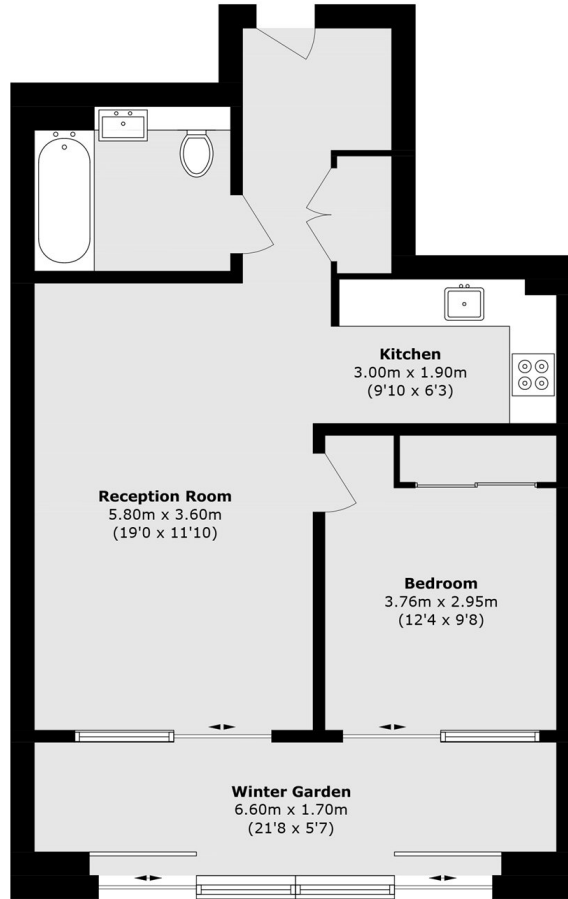
Offered to the market is this west-facing one-bedroom apartment, located on the 32nd floor and enjoying landmark views across London. The property features a winter garden, a high-specification bathroom, and a modern kitchen. The development offers residents access to exclusive leisure facilities, a 24-hour concierge service, a gym at one of the highest elevations in the UK, and a panoramic sky garden.

Located on the western edge of Canary Wharf, the property benefits from excellent transport connections, including Heron Quays DLR (0.3 miles), Canary Wharf Underground station (0.5 miles), and the regular Thames Clippers river service (0.3 miles).

Features

- 32nd Floor
- West Facing
- Resident Facilities
- Winter Garden
- Concierge services
- Chain free

Marsh Wall, London, E14



Total area (approx.): 62.3 sq. m (670.5 sq. ft)
(Including Winter Garden)