



Falcon Way, E14

£2,300 Per calendar month

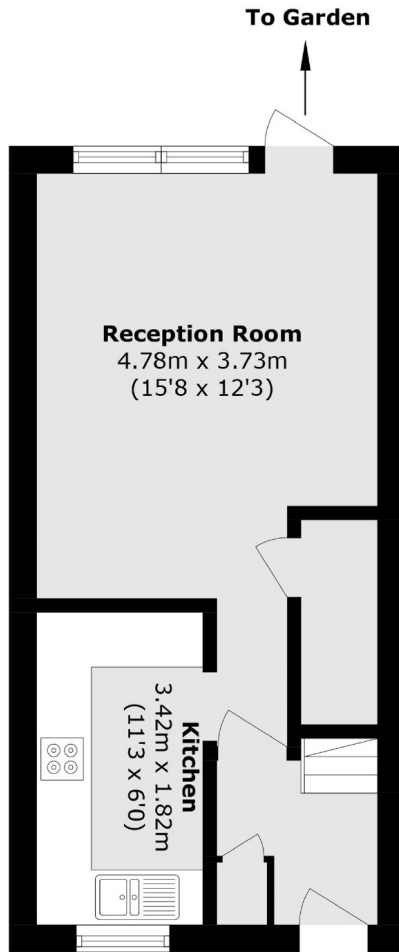
Welcome to this charming two bedroom home with impeccable views of the dock and Canary Wharf. Additional features to include a private entrance, private terrace and separate kitchen. The property does come with a parking space alongside an allocated private boat docking bay.

Mudchute DLR station is just 2 minutes away from Falcon Way offering great links around the City. You are also able to reach the city via the Thames Boat. Mudchute park and farm are moments away from the property as well as local shops and supermarkets within close proximity to the property.

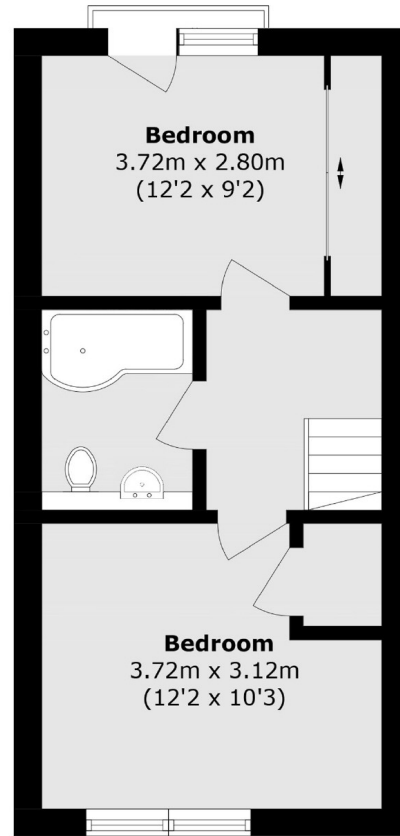
Features

- Private Outdoor Space
- Two Bedroom
- Split Level
- Dock Views
- Private Entrance
- Moments From Station

Falcon Way,
London, E14



Ground Floor



First Floor

Total area (approx.): 61.3 sq. m (659.8 sq. ft)