



Glengall Grove, E14

£425,000

Conveniently situated on Glengall Grove, we are pleased to present this three-bedroom split-level apartment. The property benefits from a south-facing private patio, 909 sq ft of internal living space, its own private entrance, and access to residents' permit parking.

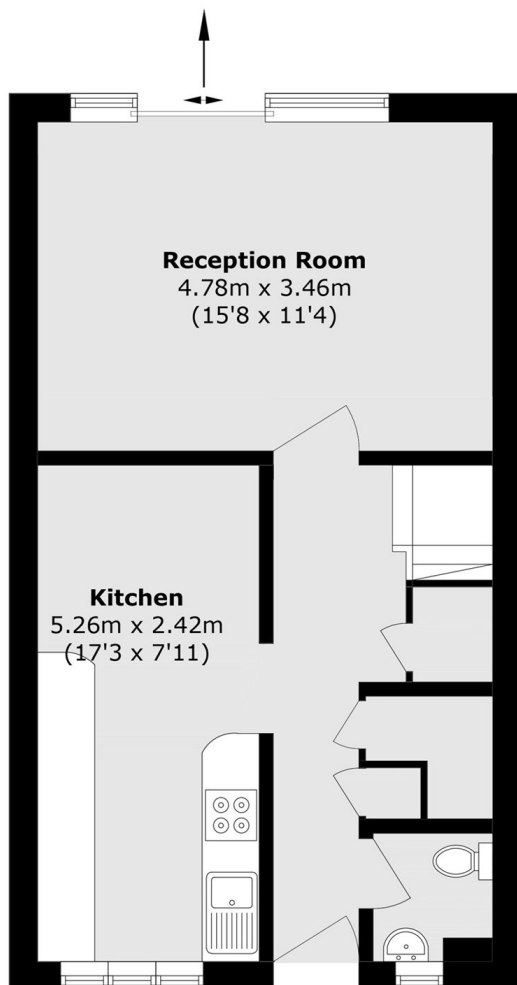
Glengall Grove is ideally located just 0.1 miles from Crossharbour DLR station, providing excellent transport links across the City. The surrounding area offers a wide range of local amenities, including the Nuffield Health gym at Baltimore Wharf (0.2 miles away), as well as an array of restaurants, cafés, and shops.

Features

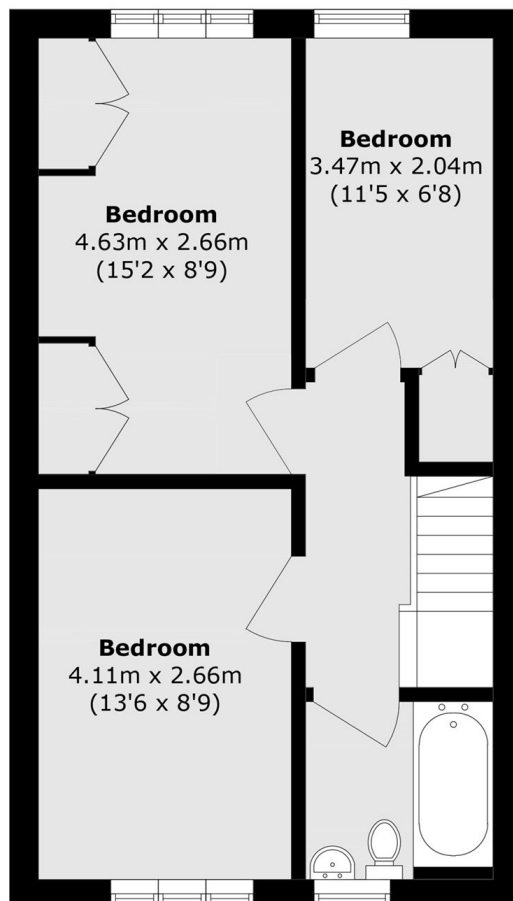
- Split Level
- Permit Parking
- 909 Square Feet
- Private Entrance
- Three Bedrooms
- Outside Space

Glengall Grove, London, E14

To Garden



Ground Floor



First Floor

Total area (approx.): 84.5 sq. m (909.5 sq. ft)