



Williamsburg Plaza, E14

£399,000

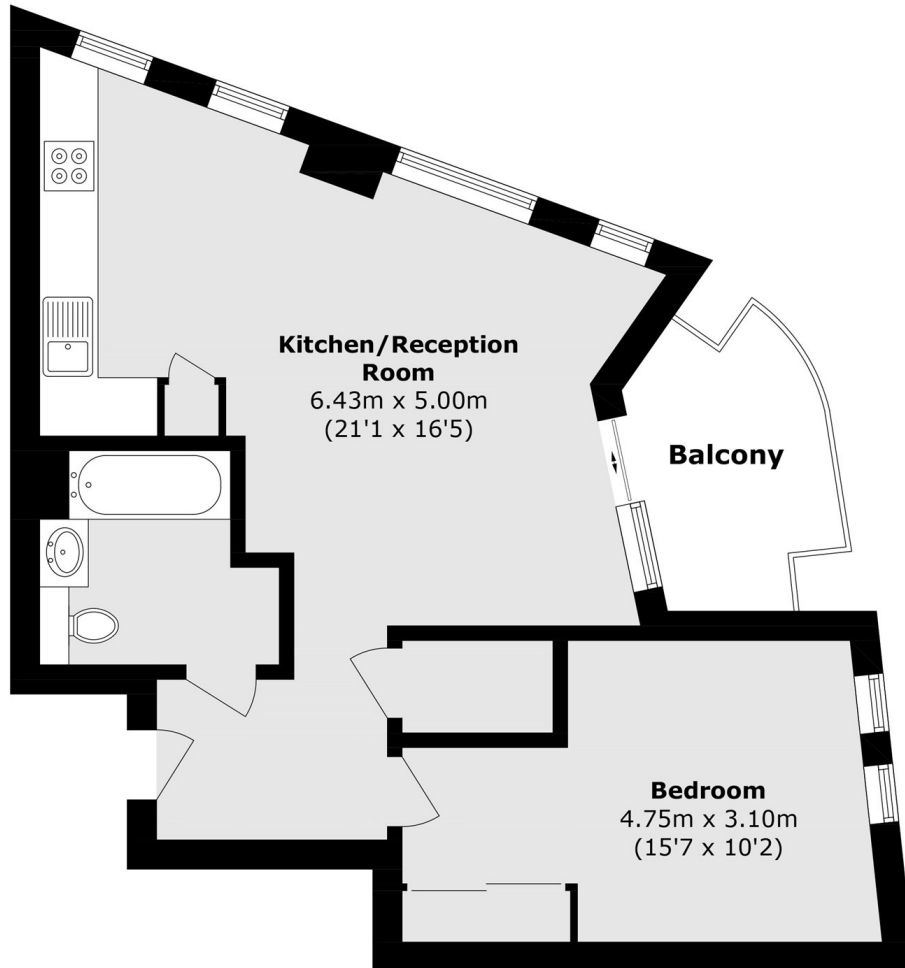
Offered to the market with no onward chain, this one-bedroom apartment in a sought-after development boasts an array of features, including floor-to-ceiling windows, which result in an abundance of natural light throughout. Offering 539 sq ft of living space and situated on a high floor, the apartment also benefits from views of Canary Wharf. Residents further benefit from access to a luxury private gym and a 24-hour concierge service.

Roosevelt Tower is ideally situated just 0.3 miles from Blackwall DLR Station and 0.9 miles from Canary Wharf Station, providing swift connections to the City and beyond, whilst remaining within walking distance of the shops, bars and restaurants in Canary Wharf itself.

Features

- One bedroom
- South facing
- 24hr concierge
- Communal roof terrace
- Luxury residents gym
- Private balcony

Williamsburg Plaza, London, E14



Total area (approx.): 50.1 sq. m (539.2 sq. ft)
Balcony area (approx.): 5.0 sq. m (53.8 sq. ft)