



Gough Walk, E14

£425,000

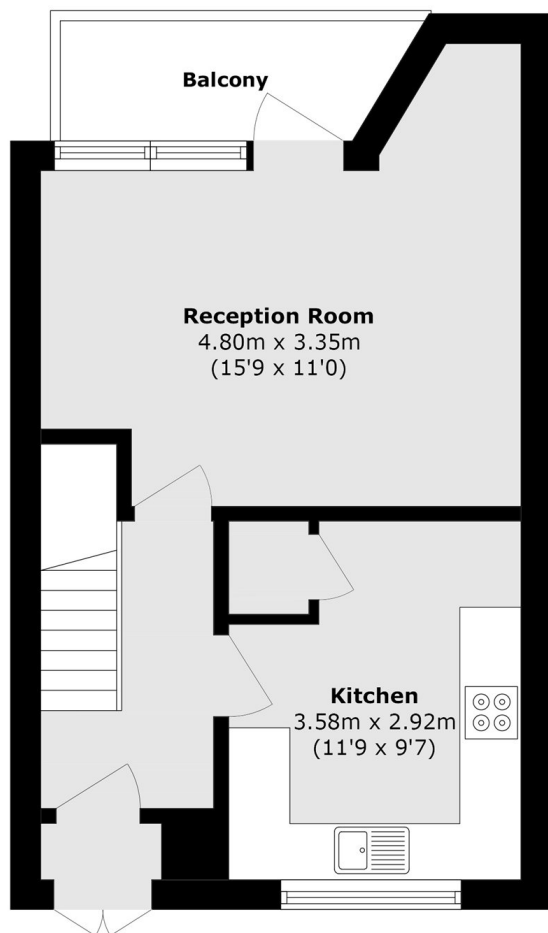
Conveniently situated on Gough Walk, we are pleased to present this well-presented three-bedroom split-level maisonette. Offered in excellent condition throughout, the property benefits from recently renovated bathrooms, a private balcony, and 817 sq ft of well-proportioned internal living space.

Gough Walk is conveniently located just 0.2 miles from Westferry DLR station, providing excellent transport links to Canary Wharf, the City, and surrounding areas. A wide range of local amenities are within easy reach, including shops, cafés, restaurants, and gyms, while the extensive retail and leisure facilities of Canary Wharf are also nearby.

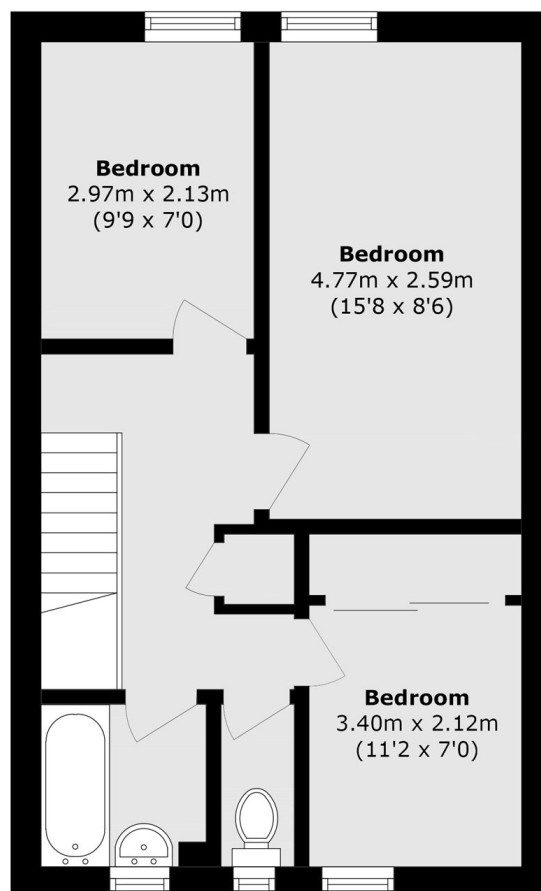
Features

- Split Level
- Private Balcony
- Three Bedrooms
- Renovated Bathroom
- 817 Square Feet
- Permit Parking

Gough Walk, London, E14



Ground Floor



First Floor

Total area (approx.): 74.9 sq. m (806.2 sq. ft)
Balcony area (approx.): 3.9 sq. m (41.9 sq. ft)