



Radial Avenue, E14

£500,000

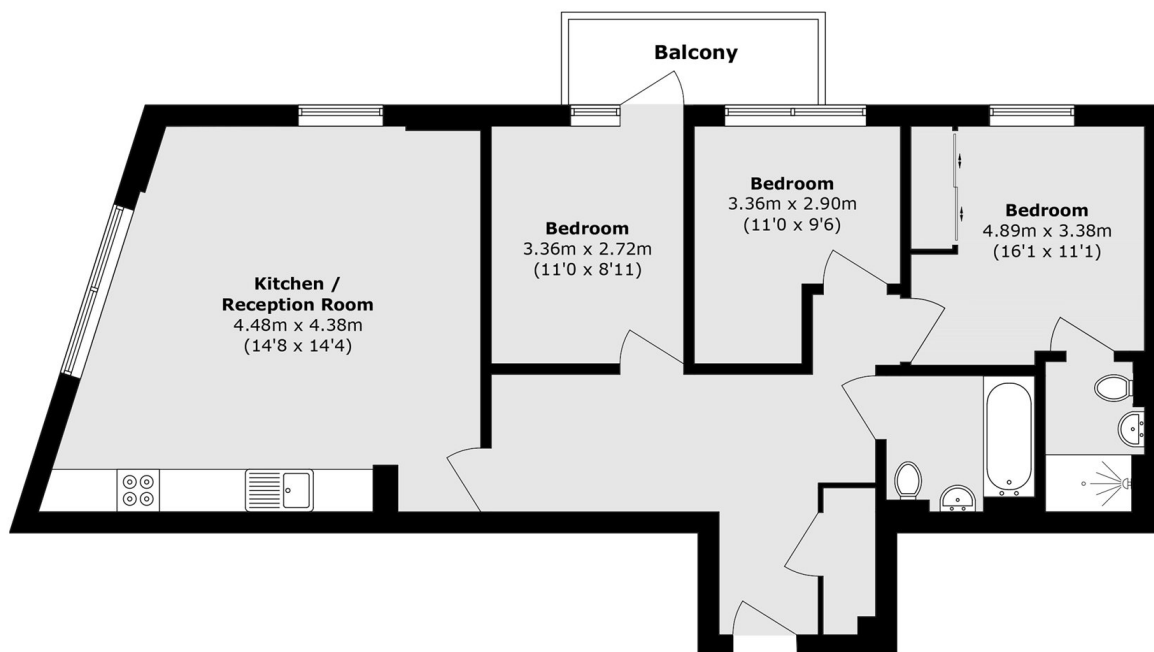
We are pleased to present this three-bedroom apartment set within a sought-after development. This modern property benefits from a secure entry phone system, floor-to-ceiling windows allowing for an abundance of natural light, private balcony access from the bedroom, and 907 sq ft of internal living space. The property is presented in excellent condition throughout.

Engine House is conveniently situated just a one-minute walk from Langdon Park DLR station, offering easy access to Canary Wharf and The City. Chrisp Street Market is also within close proximity (0.2 miles), providing a wide range of cafes, shops, restaurants and other local amenities.

Features

- 907 Square Feet
- Natural Light
- Secure Entry Phone System
- Modern Throughout
- Bike Storage
- Underfloor Heating

Radial Avenue, London, E14



Total area (approx.): 84.3 sq. m (907.4 sq. ft)

Balcony area (approx.): 4.2 sq. m (45.2 sq. ft)