



Poplar High Street, E14

£350,000

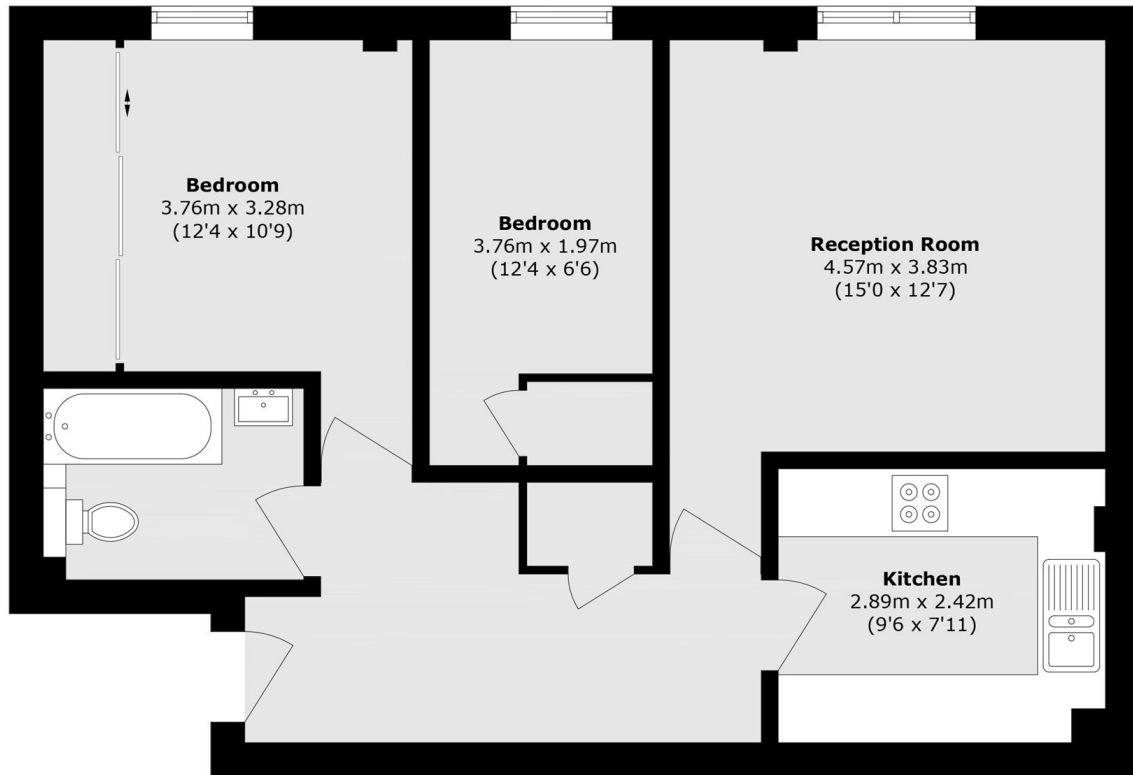
Offered to the market chain-free, we are pleased to present this two-bedroom apartment, conveniently situated on Poplar High Street. The property features a secure entry phone system, 598 square feet of internal living space, allocated parking and a large communal outdoor area with views towards Canary Wharf.

Caraway Heights is located 0.3 miles from Poplar DLR station, providing easy access to Canary Wharf and beyond. Crisp Street Market is also within walking distance (0.3 miles) and offers a wide range of cafés, local shops, restaurants, and more.

Features

- 598 Square Feet
- Secure Entry Phone System
- Outdoor Communal Area
- Access to Canary Wharf
- Secure Development
- Allocated Parking

Poplar High Street, London, E14



Total area (approx.): 55.6 sq. m (598.4 sq. ft)