



Crews Street, E14

£507 Per week

A spacious two bedroom split level apartment on the ground floor of this modern riverside development. This bright apartment has an open plan reception room and wooden flooring.

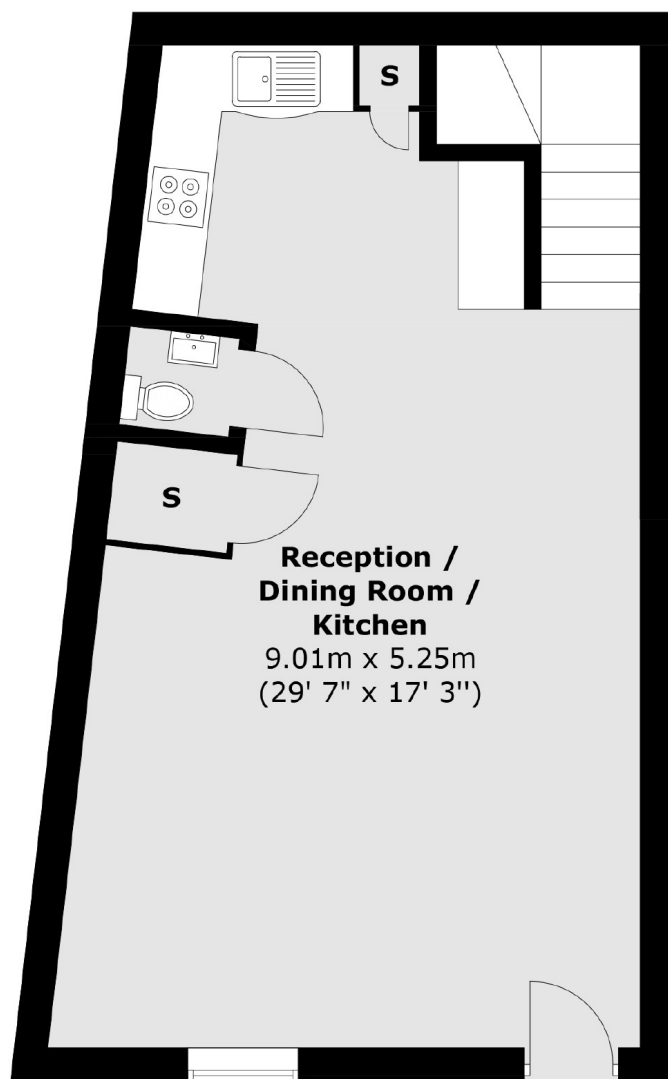
Crews Street is within walking distance of Mudchute DLR providing direct links to Central London and City Airport.

Features

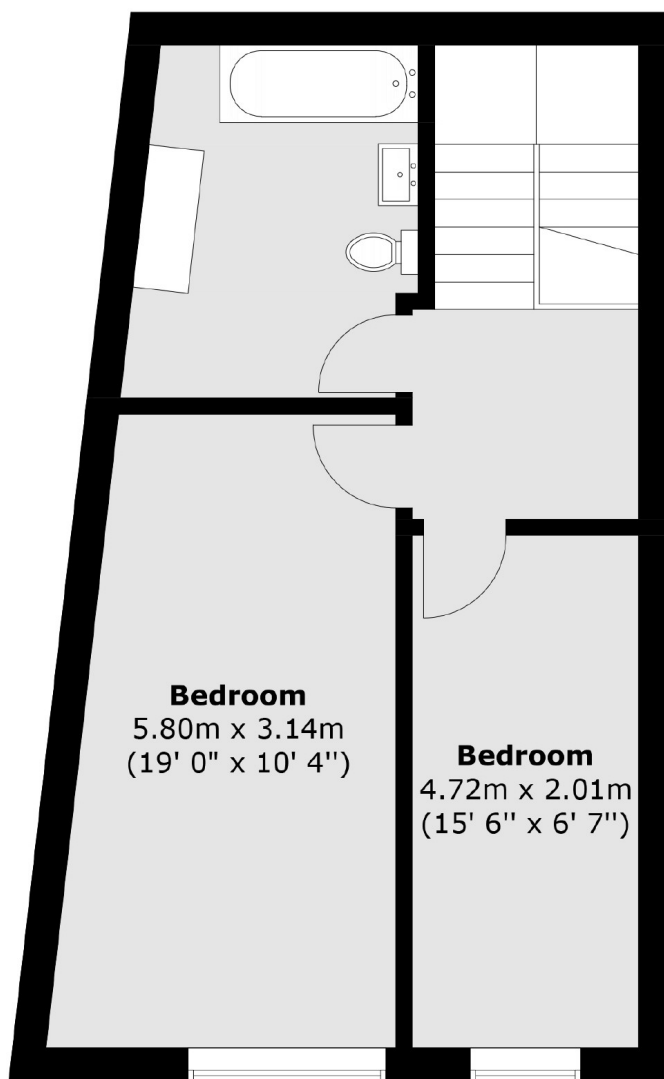
- Two Bedrooms
- One Bathroom
- Split Level
- Ground Floor
- Concierge
- Residents Gym

Crews Street, London, E14

Ground Floor



First Floor



Total area (approx.) : 91.3 sq. m (983 sq. ft)