



## Province Square, E14

£925,000

**Dexters**



## Province Square, E14

This bright and spacious three-bedroom, two-bathroom apartment in Streamlight Tower offers some of the best views in E14. Benefiting from a desirable south-facing aspect, the property is flooded with natural light throughout the day, creating a warm and inviting atmosphere. A standout feature is the substantial private terrace, which provides exceptional outdoor space and uninterrupted views across the river and docks.

Inside, the apartment offers three well-proportioned bedrooms, two modern bathrooms, and a generous living area designed to maximise natural light and take full advantage of the city views. Two of the bedrooms also benefit from built-in air-conditioning units.

Approximately 0.3 miles from East India DLR Station, offering direct connections to Canary Wharf, Bank, and Stratford. The property also benefits from easy access to the Elizabeth Line via Canary Wharf, providing fast and convenient journeys across London, including Bond Street, Paddington, and Heathrow Airport. In addition, Canning Town Station is nearby, offering the Jubilee Line and DLR services with connections to the City, the West End, and London City Airport.

### Features

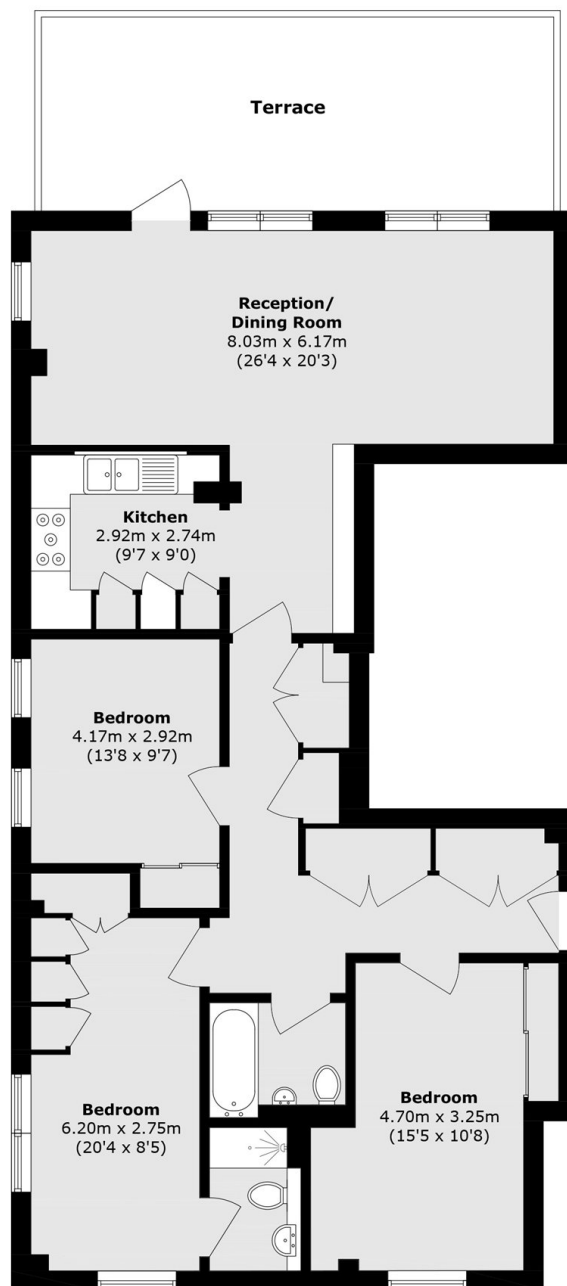
- Three Double Bedroom
- Two Bathroom
- Large Private Terrace
- South Facing
- River and Dock Views
- 1,170 Square Feet







# Province Square, London, E14



Total area (approx.): 108.7 sq. m (1170 sq. ft)  
Terrace area (approx.): 24.0 sq. m (259.0 sq. ft)