

Marsh Wall, E14

£425,000

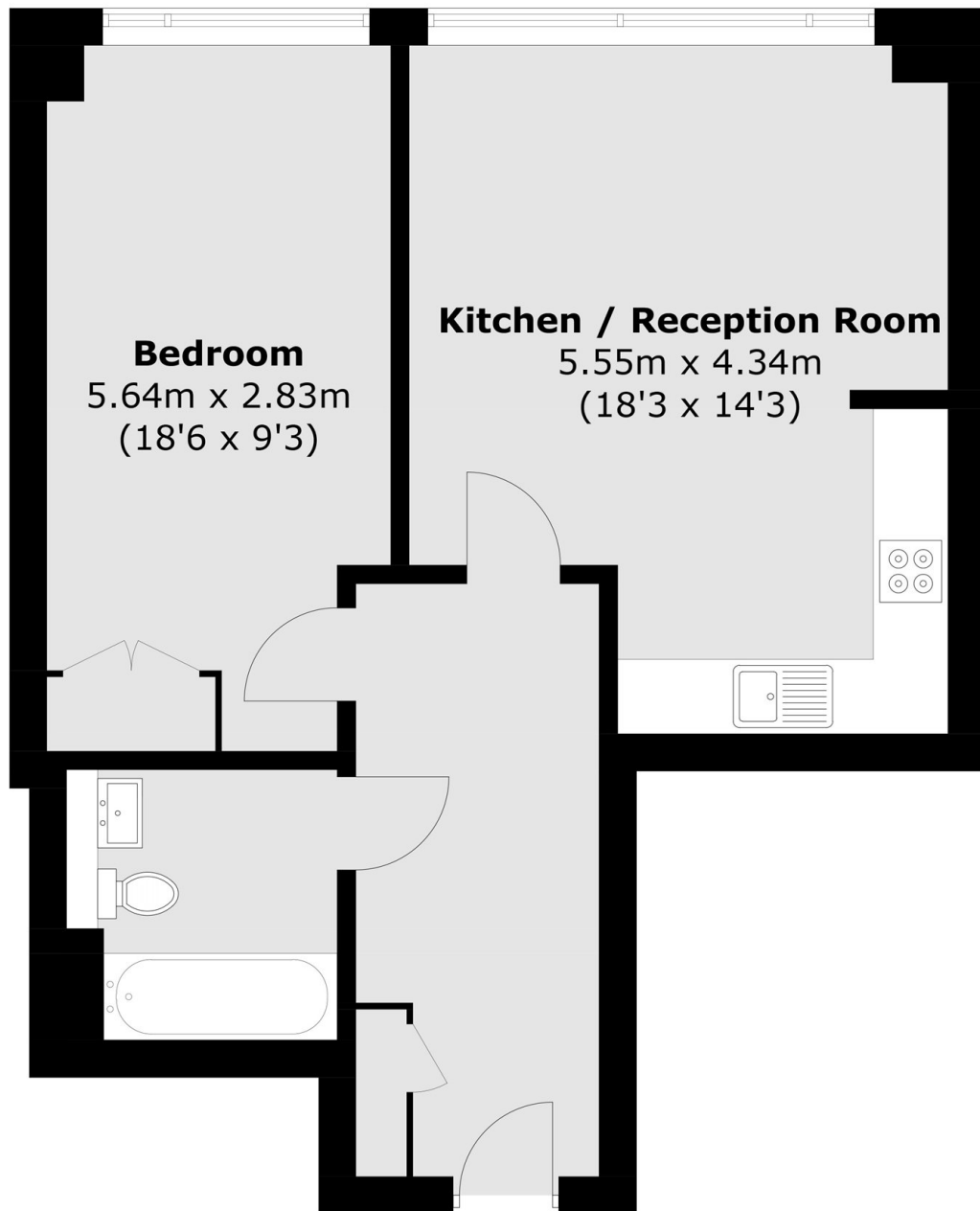
Positioned on the 13th floor of the prestigious Landmark West Tower, this beautifully presented one-bedroom apartment enjoys stunning views across the River Thames. Flooded with natural light from floor-to-ceiling windows, the property features a spacious open-plan living and dining area designed to make the most of the impressive outlook. The contemporary kitchen is finished to a high standard with integrated appliances, providing a stylish and practical space for modern living.

Landmark West Tower enjoys a prime position on Marsh Wall, just moments from Canary Wharf's financial district and its wide range of shops, restaurants, and leisure facilities. The development is approximately 0.4 miles from Heron Quays DLR Station and 0.6 miles from Canary Wharf Underground Station (Jubilee Line), providing excellent transport links across London.

Features

- 13th Floor One Bedroom
- River Thames Views
- Floor-to-Ceiling Windows
- Open-Plan Living Space
- Modern Integrated Kitchen
- 24-Hour Concierge & Gym

Marsh Wall, London, E14



Total area (approx.): 53.2 sq. m (572.6 sq. ft)