



Millennium Drive, E14

£450,000

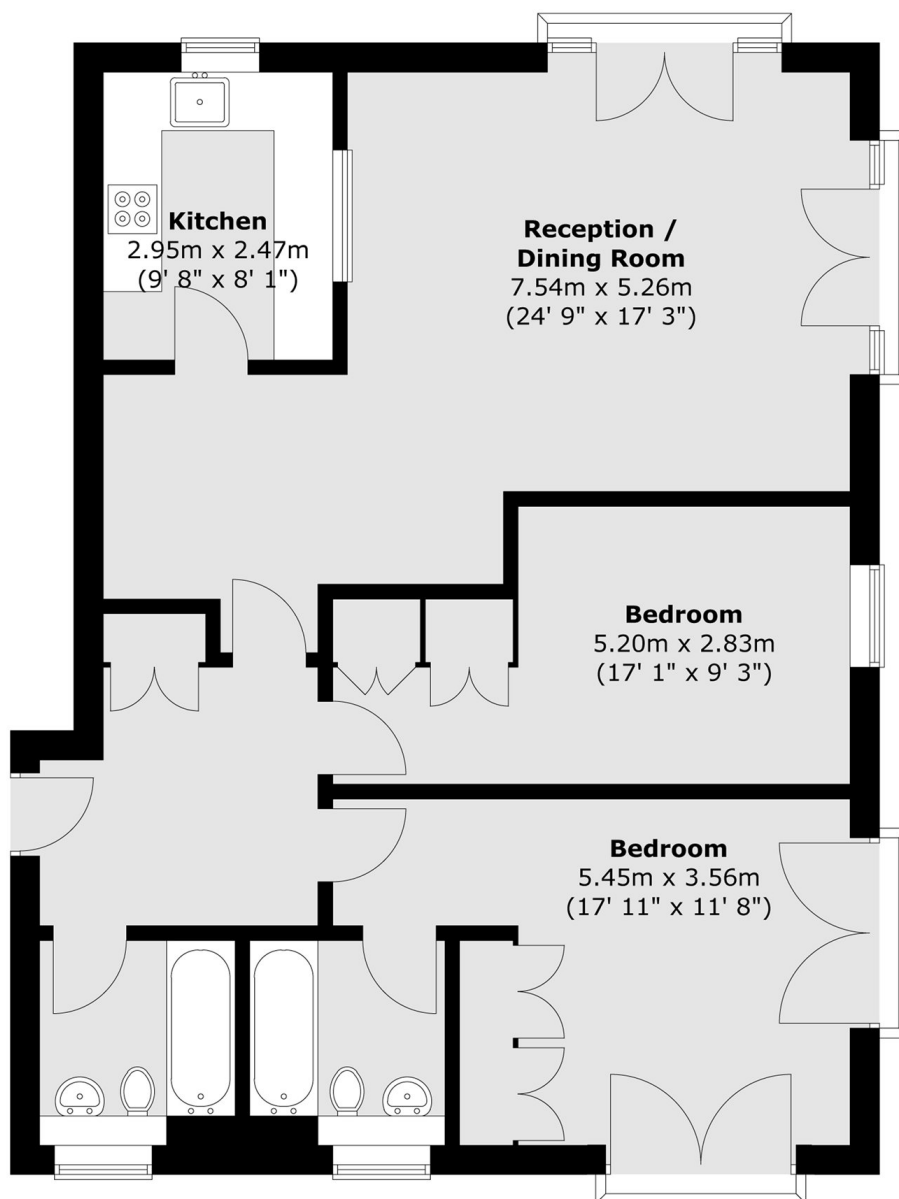
We are delighted to present this spacious two-bedroom, two-bathroom apartment, set within the highly sought-after riverside development of Millennium Drive. Offering over 900 sq ft of well-designed living space, this exceptional home is ready for immediate occupation and has been maintained to an excellent standard throughout. The property comprises two generous double bedrooms, including a principal bedroom with an en-suite bathroom, a contemporary family bathroom, and a bright and spacious living and dining area, creating an ideal space for both relaxing and entertaining.

The development is ideally located within easy reach of Canary Wharf, offering excellent transport links, scenic riverside walks, and an abundance of local amenities, including a wide selection of restaurants, cafés, and shopping facilities.

Features

- Two Double Bedrooms
- Two Bathrooms
- Over 900 Square Feet
- Gated Riverside Development
- Two Secure Parking Spaces
- Multiple Juliet Balconies

Millennium Drive, London, E14



Total area (approx.) : 88.2 sq. m (949 sq. ft)