



## Mercury Walk, E14

£650,000

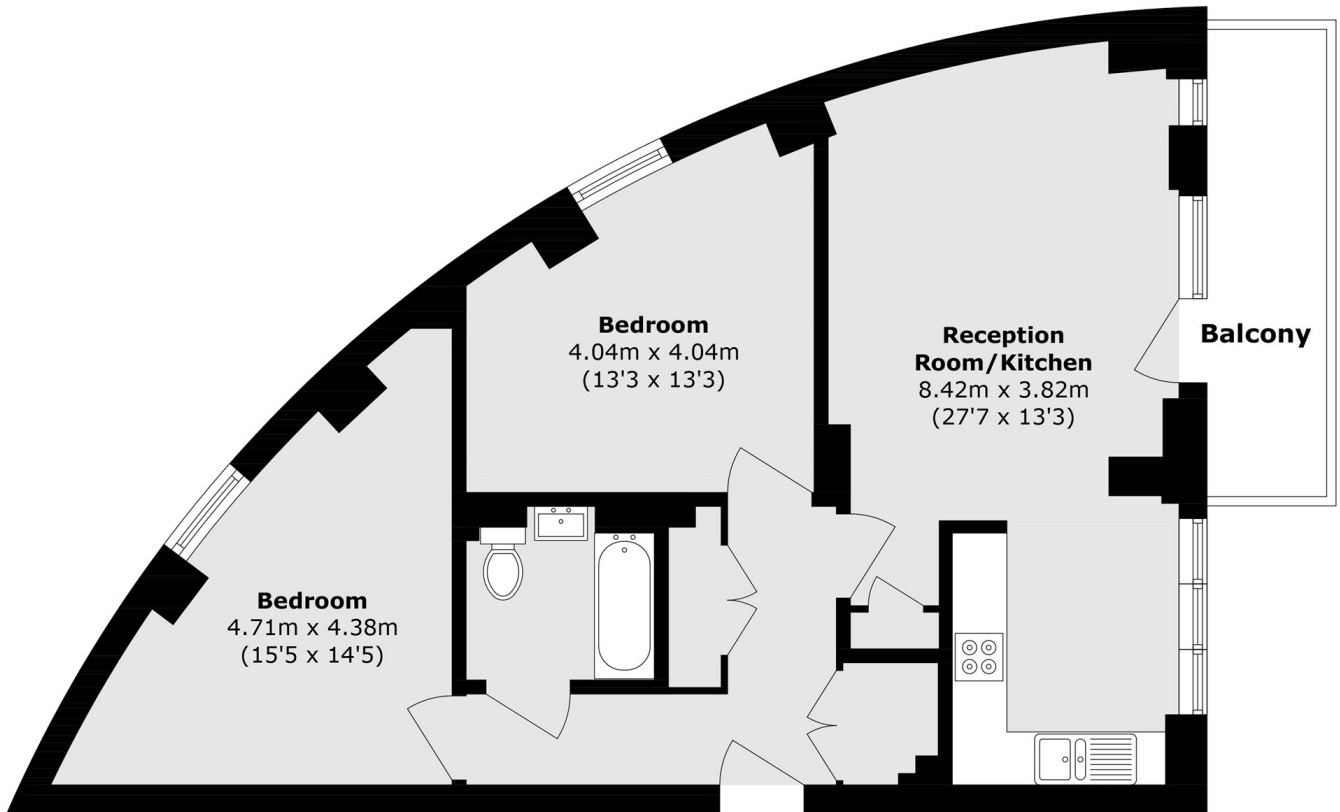
Situated on the 19th floor of the sought-after Russet House development, this beautifully presented two-bedroom apartment boasts spectacular south-facing views towards the River Thames and The O2, together with an abundance of natural sunlight throughout the day.

Russet House forms part of the highly regarded Blackwall Reach regeneration development, offering residents a convenient East London lifestyle with excellent transport connections. Canning Town Station is just a short walk away across the river, providing quick access to the Jubilee Line, DLR and Elizabeth Line connections via Canary Wharf. Blackwall and East India DLR stations are also within easy reach. The development is positioned moments from Canary Wharf, the Thames Path, local amenities, restaurants and green open spaces.

### Features

- 19th Floor Apartment
- Two Bedroom
- South Facing Aspect
- River And O2 Views
- Private Balcony
- Modern Integrated Kitchen

# Mercury Walk, London, E14



Total area (approx.): 69.7 sq. m (750.2 sq. ft)

Balcony area (approx.): 7.0 sq. m (75.3 sq. ft)