



## Manilla Street, E14

£325,000

Offered to the market chain free, this charming one-bedroom apartment is ideally situated on Manilla Street, within easy reach of Canary Wharf. The property benefits from a refurbished finish throughout, wooden flooring, a secure entry phone system, and a walk-in wardrobe adjoining the bedroom.

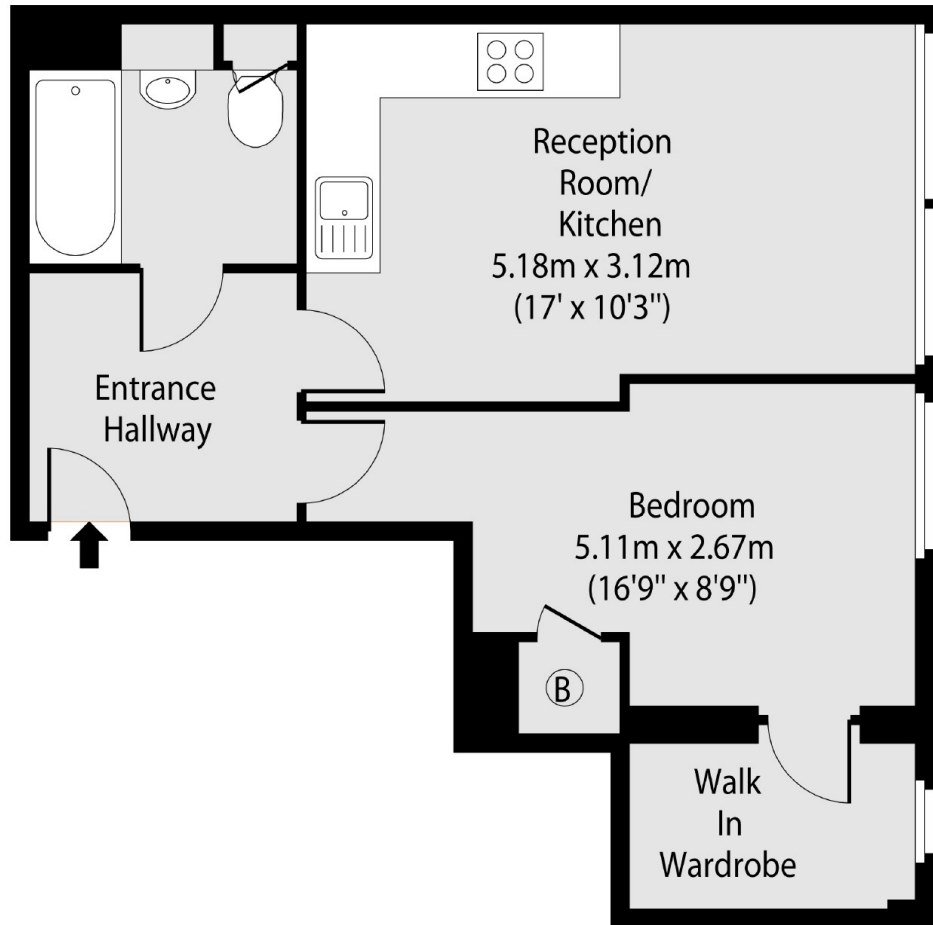
Manilla Street is moments from the bars and restaurants of Westferry Circus, including the popular Royal China. Canary Wharf station is approximately 0.6 miles away, while Heron Quay DLR is just 0.1 miles from the property, offering excellent transport links into the City and beyond.

### Features

- One Bedroom
- One Bathroom
- First Floor
- Wooden Flooring
- Refurbished
- Walk in Wardrobe

# Manilla Street, London, E14

## First Floor



Total area (approx): 39.30 sq m (423 sq. ft)