



## Thomas Road, E14

£650,000

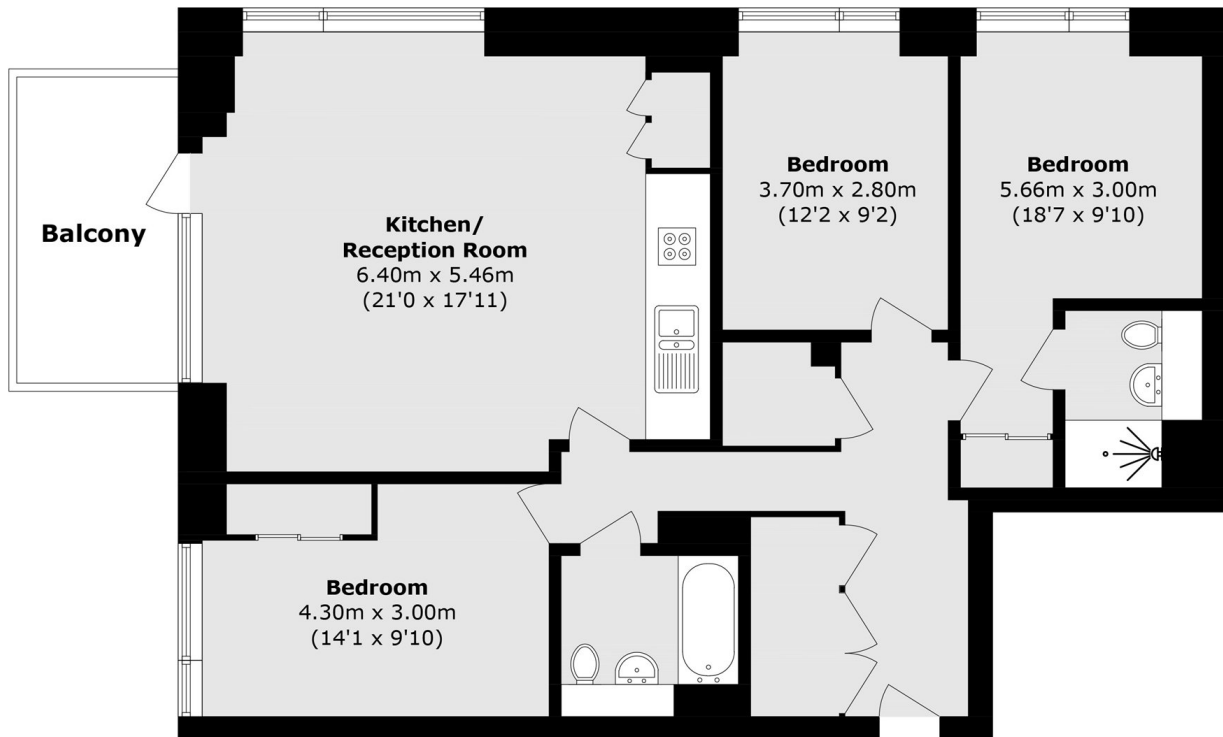
Situated within a modern development in the heart of E14, this spacious three-bedroom apartment offers generous living accommodation throughout. The property features a bright open-plan kitchen and reception room with direct access to a private balcony enjoying views of the canal and Canary Wharf, while the three spacious double bedrooms provide ample accommodation. Further benefits include access to a residents' gym and concierge services..

Ideally located, the property is just 0.3 miles from South Quay DLR Station, 0.6 miles from Limehouse DLR Station, and approximately 0.7 miles from Canary Wharf Station, all offering excellent transport links across the City and beyond. Each station can be reached within approximately 515 minutes on foot.

### Features

Three Double Bedrooms  
Private Balcony  
Residents Gym  
concierge Service  
1,015 Square Feet  
Modern Development

# Thomas Road, London, E14



Total Area (approx.): 94.3 sq. m (1015.0 sq. ft)  
Balcony area (approx.): 7.6 sq. m (81.8 sq. ft)