



Blackwall Way, E14

£475,000

Offered to the market chain free, this well-presented three-bedroom apartment is ideally situated on Blackwall Way. Offering 854 sq. Ft. Of well-proportioned internal living space, the property features three generously sized double bedrooms, a secure entry phone system, and benefits from a low service charge. Flooded with natural light throughout, this spacious apartment presents an excellent opportunity for both owner-occupiers and investors alike.

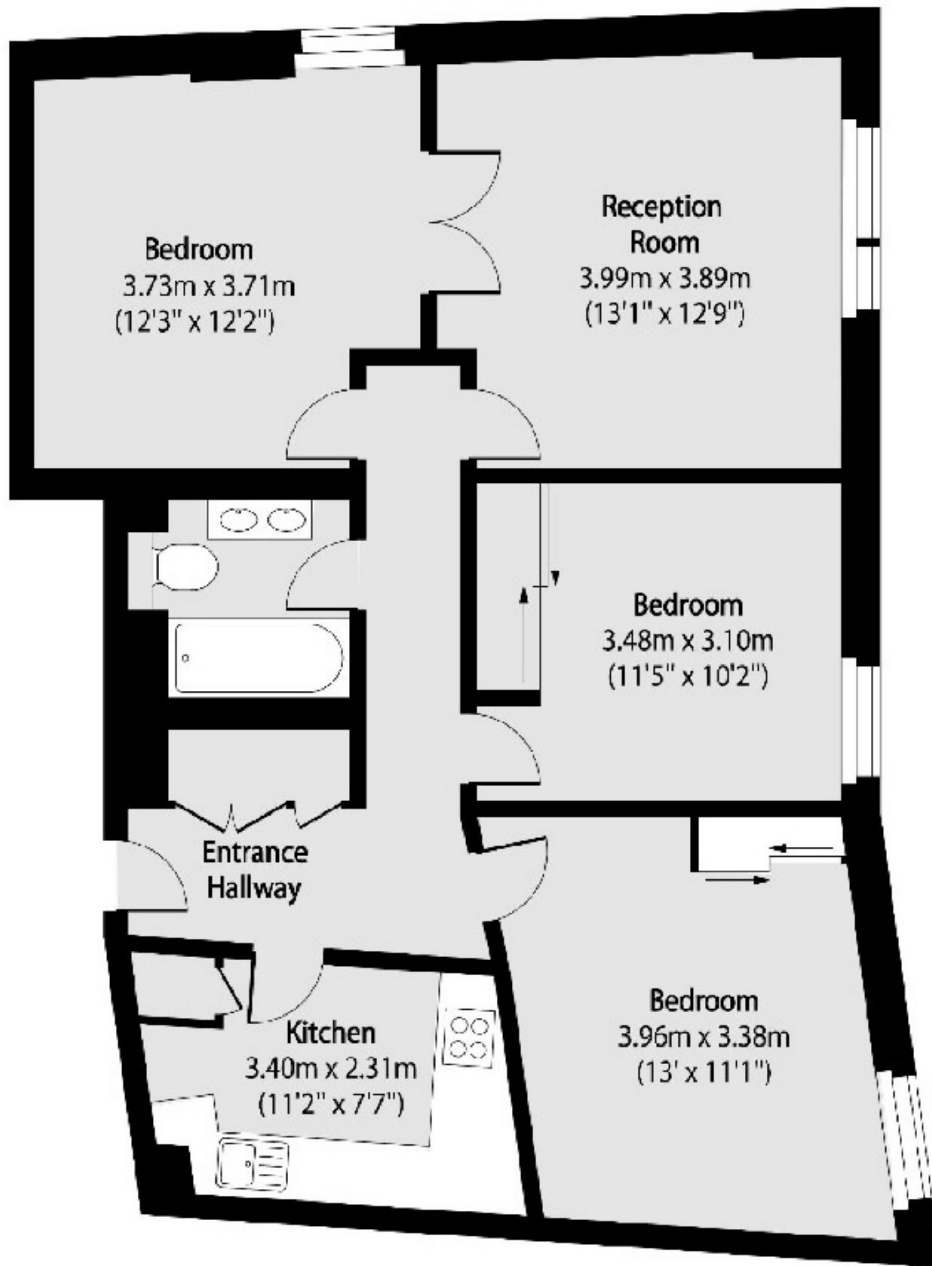
Blackwall Way is conveniently situated just 0.2 miles from Blackwall DLR Station, offering excellent connections to Canary Wharf and the City.

Features

- Three Double Bedrooms
- 854 Square Feet
- Chain Free
- Natural Light
- Low Service Charge

Blackwall Way, London, E14

Fourth Floor



Total area (approx): 79.34 sq m (854 sq. ft)