



## Middlesex Street, E1

£4,750 Per calendar month

Refurbished to the highest of standards, this two double bedroom penthouse apartment in the heart of The City will be perfect for a discerning tenant. This amazing property has two large double bedrooms, a modest study, a large open plan living and kitchen area, two bathrooms, a separate WC and a private roof terrace. An ideal property for a professional couple working in the City.

Astral House is located close to Liverpool Street Station with all the major underground and overground transport links and just moments from Spitalfields Market.

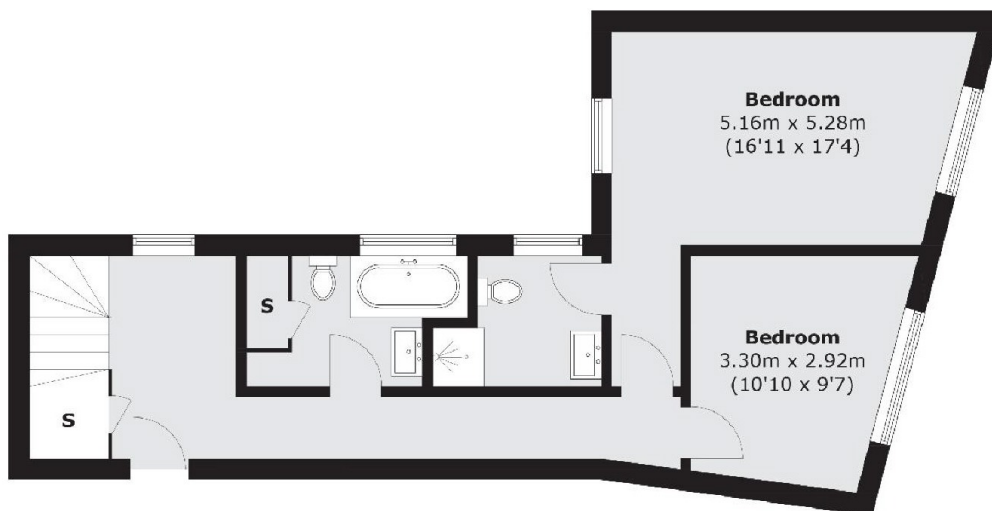
### Features

- Two Double Bedrooms
- Top Floor
- Private Roof Terrace
- Open Plan Living Area
- Recently Refurbished
- Heart of The City

# Middlesex Street, London, E1



**Fourth Floor**



**Third Floor**

Total area (approx.): 124.4 sq. m (1,339.0 sq. ft)  
Roof Terrace (approx.): 19.8 sq. m (213.1 sq. ft)  
(Excluding Eaves)