



Alameda Place, E3

£425,000

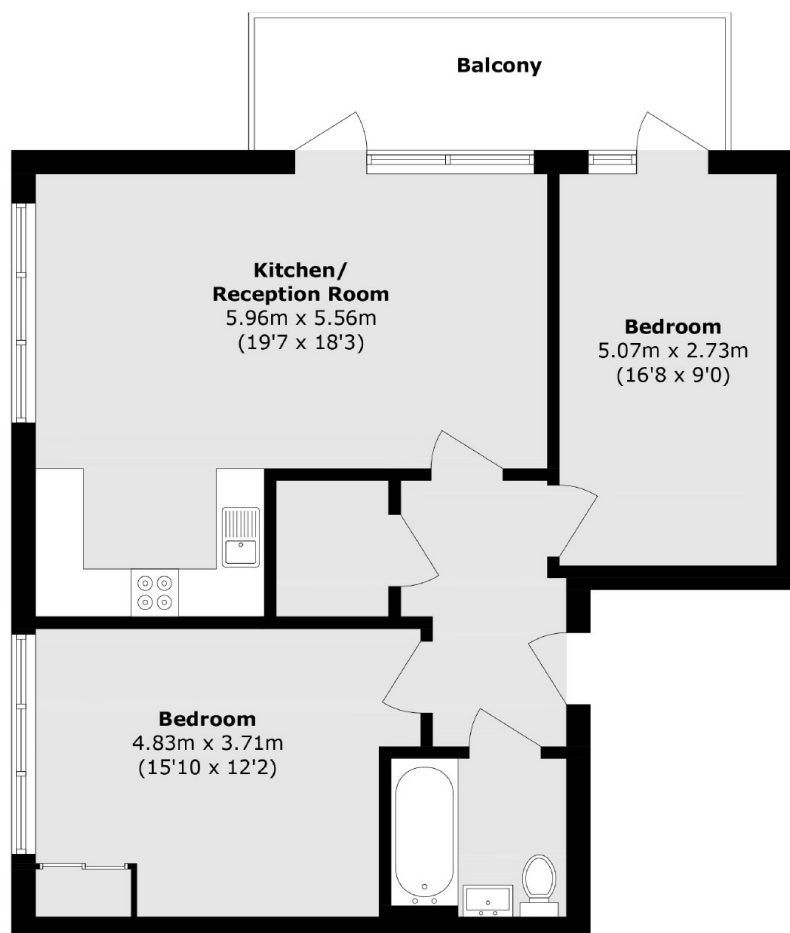
A modern two double bedroom apartment measuring in excess of 800 sq ft. And is Located within a secure development. This property has an open plan living and kitchen with floor to ceiling windows and double doors out onto a full width balcony. This property has an abundance of storage space, bike storage and is available chain free.

Centrally located within easy reach of Bow, Stratford, Hackney Wick and Victoria Park for all local shops, restaurants and cafés as well as great transport links including multiple tube stations within a third of a mile.

Features

- Two Double Bedrooms
- Modern
- Secure Development
- Bike Storage
- Balcony
- Chain Free

Alameda Place, London, E3



Total area (approx.): 75.1 sq. m (808.4 sq. ft)

Balcony area (approx.): 9.8 sq. m (105.5 sq. ft)