



Pound Path, E3

£550,000

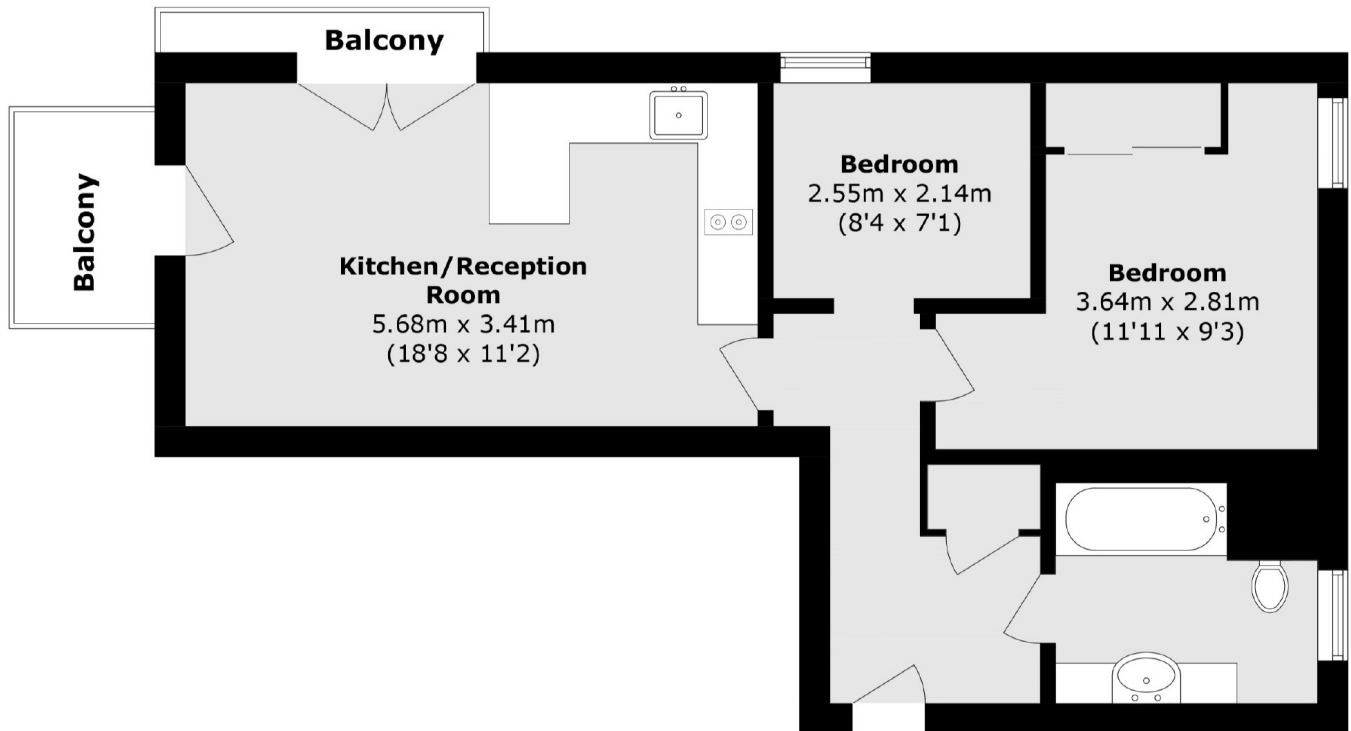
A two-bedroom apartment in Stop Lock Apartments, a boutique residential block located opposite Victoria Park. The apartment features Dinesen Douglas Fir flooring and a recently renovated open-plan kitchen with a breakfast bar integrated into the main living area. The living area property has dual aspect floor to ceiling windows and doors leading you out to a private south facing balcony overlooking the canal.

This property is 100 yards from Victoria Park with its many shops, restaurants and cafes. The nearest station Mile end and Bethnal Green both on the central line providing easy access to the City and Canary Wharf.

Features

- Douglas Fir Pine Flooring
- Two Bedrooms
- Secure Development
- Canal Views
- South Facing
- Victoria Park

Pound Path, London, E3



Total area (approx.): 52 sq. m (566 sq. ft)
Balcony total area (approx.): 4.2 sq. m (45.2 sq. ft)